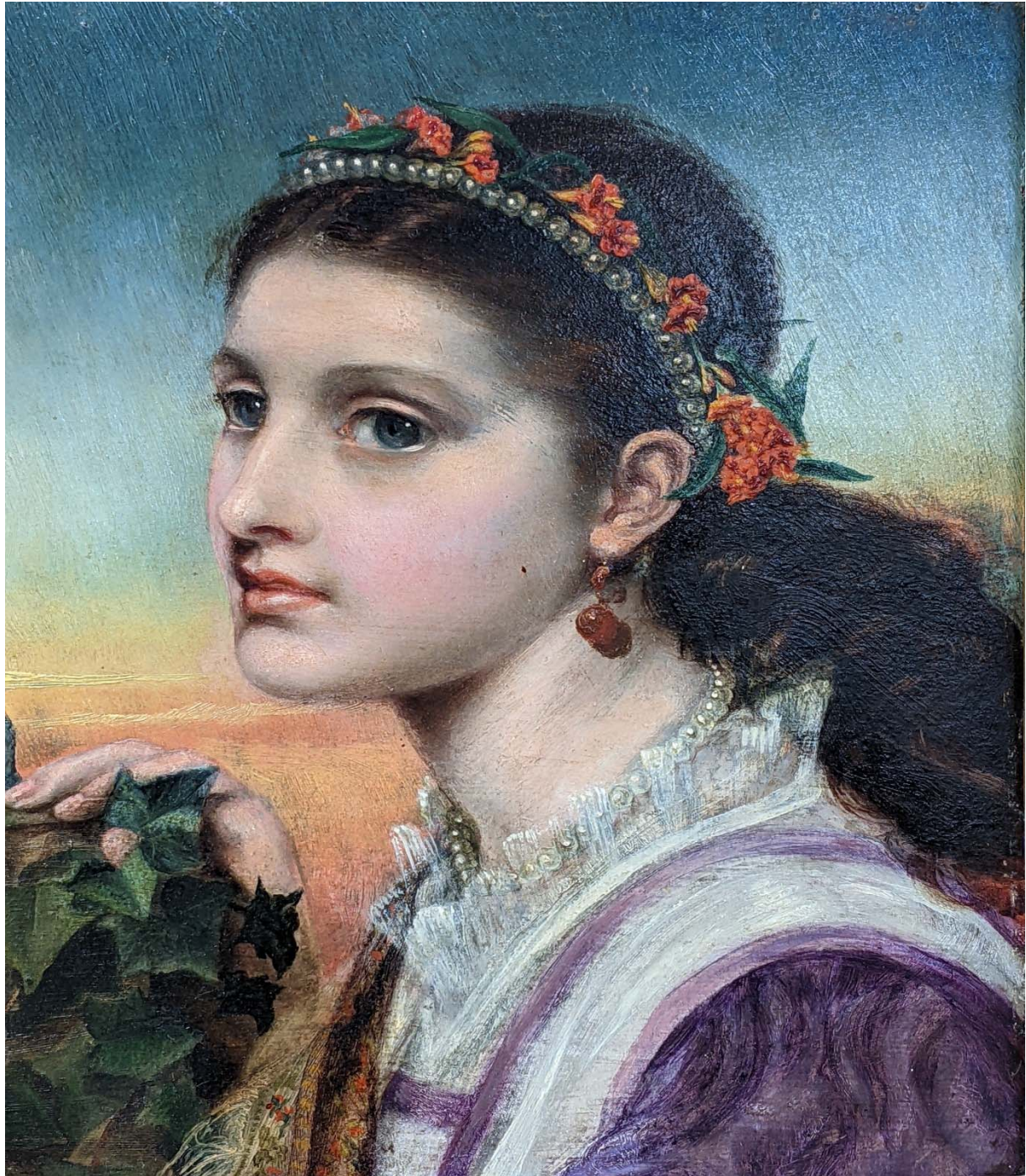


# HOME & INTERIORS

## Saturday 30<sup>th</sup> September at 10am



**VIEW: Friday 10am-7pm and sale day from 9am**

**FREE LIVE BIDDING THROUGH OUR WEBSITE**

Buyer's premium 22.5% plus VAT

## *A world-class service from a provincial auction house*

### **VALUATIONS**

Our team of professional valuers have a wealth of experience and are committed to providing accurate verbal and formal valuations for all purposes:

Free verbal appraisal for items considered for sale (without obligation) at our offices or by appointment in your own home for large/numerous items. Or using our online valuation service. Formal market valuations for the administration of an estate, Probate, Family Division and Insurance.



*Sold left to right £77,000, £61,000, and £21,000*

### **SALES TO SUIT**

A wide spectrum of auctions held throughout the year ensures your property is offered to best advantage.

Our comprehensive calendar of auctions are all fully catalogued and are hosted online.

### **BUYING MADE SIMPLE**

Free live bidding via our website.

Public viewing prior to every auction.

Condition reports and extra images online.

### **PROPERTY CLEARANCE**

A complete chattels clearance service is available for solicitors, executors and trustees.



*Sold £23,000*



*Sold £41,000*



*Sold £27,000*

*Sold £18,000*



*Sold £72,000*



*Sold £35,000*



*Sold £23,000*



*Sold £42,000*

## IMPORTANT NOTICES

Special attention is drawn to the **Terms of Sale** printed in this catalogue and displayed in the saleroom. The staff at the Auction Centre welcome your custom and hope that the following information makes your buying visit as simple and enjoyable as possible.

**Paddle Bidding:** All buyers need to register at the office for a paddle number to enable them to bid, this process is simple and takes approximately 30 seconds, however, we do require some form of identification i.e. driver's licence.

**Absentee Bidding:** Buyers unable to attend the sale are welcome to submit commission bids, simply fill in a commission bidding form and hand this to a member of staff, or telephone your bids through and we will bid on your behalf. Commission bids can also be emailed to [fineart@lsk.co.uk](mailto:fineart@lsk.co.uk). It is important to allow sufficient time for commission bids to be processed when leaving bids. Lacy Scott & Knight offer a **free online bidding service** via our website. Clients can set up an account on our website which allows you to leave bids until half an hour before the auction starts, and then you can bid live. See our website for full information. Please note that if you register for our auction on [thesaleroom.com](http://thesaleroom.com) first, then you will be liable for their 4.95% (plus VAT) fee. In completing the bidder registration on our website (or [thesaleroom.com](http://thesaleroom.com)) and providing your credit/debit card details, and unless alternative arrangements are agreed with Lacy Scott & Knight you authorise Lacy Scott & Knight, if they so wish, to charge the credit/debit card given in part or full payment, including all fees, for items successfully purchased in the auction via LSKlive or [the-saleroom.com](http://the-saleroom.com), and confirm that you are authorised to provide these credit/debit card details to Lacy Scott & Knight through LSKlive or [thesaleroom.com](http://thesaleroom.com).

**Condition:** Neither the Auctioneers nor the Vendor are responsible as to the condition of lots listed. The absence of any such reference does not imply that a lot is in good order or free from imperfections or repairs. Intending purchasers are strongly recommended to satisfy themselves by inspection prior to the sale of the condition of any lot. Condition reports can be compiled upon request, but must be considered solely as a matter of opinion and not fact. Purchasers are reminded that goods become the sole responsibility of the buyer at the fall of the hammer.

**Electrical goods:** These are sold as "antiques" only. If you buy electrical goods for use you must ask a qualified electrician to check them for compliance with safety regulations before you use them.

**VAT:** VAT at the prevailing rate is payable on top of the hammer price on those lots marked (\*) in the catalogue.

**Buyer's Premium:** All lots are sold with a Buyer's Premium of 22.5% (unless otherwise stated), this figure is also subject to VAT at the prevailing rate e.g. a buyer with a hammer total of £100 will have a gross invoice of £127.

**Selling Rate:** Our auctioneers sell at approximately 120 lots per hour, buyers are advised to make sure they are in the saleroom at least 20 minutes before a lot is expected to be offered in case the auctioneer is ahead of schedule.

**Droit de Suite:** Please note that purchasers of works of art subject to Droit de Suite (ARR) will pay Lacy Scott & Knight a 4% (inclusive of VAT) premium on the hammer price in addition to the buyer's premium. Lacy Scott & Knight will then pass this onto the Design & Artists Copyright Society or Artists Collecting Society. A painting or work of art is subject to Droit de Suite in the UK **whilst the artist is living and 70 years after the artist's death**. A percentage of 4% is payable on lots with a hammer price in excess of €1000 (approx. £850).

**Payment:** We accept most methods of payment including cash (up to £10,000), cheques supported by valid banker's card, debit cards and credit cards (Not AMEX or Diners Club).

**Bank:** LLOYDS, 9 Buttermarket, BURY ST EDMUNDS **CLIENT:** Lacy Scott & Knight LLP **ACCOUNT NO:** 32257868 **SORT CODE:** 30-64-22

**Collection/Delivery:** All lots must be removed from the Auction Centre by midday on the Tuesday following the sale unless prior arrangement has been made with the auctioneers. Lacy Scott & Knight offer a full local collection and delivery service which is charged at £50/hr plus VAT.

**Packing and Postage:** We can offer a fully tracked postage & packing service within mainland UK & Europe. Our standard mainland UK charge is £20 for up to 3 lots, and £1.50 per lot thereafter, regardless of weight (max.30kg). Some exclusions apply for larger lots such as dinner services and furniture, please contact us for a quote regarding larger or bulkier lots. For Jewellery & Watches and Coins & Banknotes auctions only, we offer a reduced Special Delivery charge of £15 per parcel regardless of the amount of lots. LSK accept no liability for items which are damaged or lost during postage. Please give clear instructions when settling your account as to your shipping requirements so that we can process full payment and ship within 10 working days.

You can simply add the postage amount to your bank transfer or website payment. Please note that Lacy Scott & Knight DO NOT accept any liability for loss or damage, however caused. For large, high value parcels (over £2,500), fragile items, or overseas shipping we STRONGLY RECOMMEND Mail Boxes Etc, tel. 01245 262 527 (email [info@mbemail.co.uk](mailto:info@mbemail.co.uk)); for larger items such as furniture Alban Shipping, tel.01582 493 099 (email [info@albanshipping.co.uk](mailto:info@albanshipping.co.uk)). If you instruct an alternative courier to collect, this charges at £8 per parcel packed and no liability is accepted.

**How to find us:** The Auction Centre is situated in the heart of historic Bury St Edmunds, directly behind the arc shopping centre and close to main bus/coach and train stations and the A14 dual carriageway. 10 Risbygate Street, Bury St Edmunds, Suffolk, IP33 3AA.

**Parking:** We have our own large car park adjacent to the Salerooms which is free of charge to all buyers (**sale days and viewing only**), when this car park is full we suggest using the large Borough car parks close to the Auction Centre.

We will be selling simultaneously as follows:

JLS Room Lots 1– 647 commencing at 10am

Henry Room Lots 1001-1299 commencing at 10am

(Toys Lot 1501+ commencing 1pm)

Buyer's premium – 22.5% plus VAT – FREE BIDDING THROUGH OUR WEBSITE

*Delivery of larger items of furniture can be arranged at reasonable rates. Please ask us for details*

**JLS ROOM – 10AM**

1 An Austrian pottery model of Cupid, early 20th century, shown leant on a stump with bow raised, impressed 'Made in Austria' to the underside, h.69cm

2 An 18th century Chinese blue and white porcelain charger, decorated with flowers, dia.35cm (a/f)

3 An early 20th century mahogany cased perpetual wall calendar, 30 x 24cm

4 A bronze figure of a lady, shown with arm raised, h.47cm

5 A 20th century silver painted metal anglepoise desk lamp

6 An early 20th century gingerbread type mantel clock, the chapter ring showing Roman numerals, having eight-day movement striking on a gong, h.61cm

7 A pair of 20th century cream painted metal anglepoise desk lamps

8 A Moorcroft pottery table lamp, tube-line decorated in the Anemone pattern, h.36cm (including fittings)

9 A 20th century metal anglepoise desk lamp

10 An Art Nouveau style brass desk lamp, having a frosted glass shade, h.34cm

11 A pair of porcelain table candlesticks, each in the form of a parrot perched upon a stump, having Rococo style gilt metal fittings, h.35cm

12 A reproduction Volkswagen advertising fuel can, h.34cm

13 A head and shoulders bust of a dog dressed as a racing driver, h.49cm

14 A green toleware type tea canister, gilt decorated with birds amongst flowers, h.36cm

15 A composite portrait head of a bearded gentleman, h.39cm

16 A 20th century black and white studio glass vase, h.39cm; together with a blue and clear glass example, h.30cm (2)

17 A near-pair of verdigris metal hanging lanterns, the largest h.61cm

18 A painted terracotta bust of a stag, h.78cm

19 A pair of Chinese blue and white porcelain vases, each decorated in the Prunus pattern, h.38cm

20 A Chinese blue and white porcelain dish, Kangxi period, decorated with warriors, six character Chenghua reign mark within double rings to the reverse, dia.34.5cm (a/f)

21 A brass easel mirror in the form of a fan, w.38cm

22 A pair of composite head and shoulder busts, h.45cm

23 Michael Cardew (1901-1983) for Abuja Pottery - a studio stoneware footed table bowl, having a slightly rounded rim, ribbed body with stylised combed Tenmoku glaze, artist monogram and Abuja seal mark to outer edge of foot rim, dia.27.5cm

24 A pair of cut glass decanters, each of mallet form, height 34cm

25 A collection of Derby porcelain tea and coffee wares, late 18th/early 19th century, largest saucer dia.14cm (8)

26 A Staffordshire model of the British lion over Napoleon III, circa 1860, the lion shown with paws raised over the figure, h.25cm

27 A pair of figural brass table candlesticks, h.23cm; together with another pair in the form of anchors, h.18cm

29 An early 20th century Black Forest carved wood model of three standing bears, on shaped conforming base, height 21.5cm

30 A pair of late 19th century Dutch brass table candlesticks, each having a removable scone and on griffin supports to circular base, h.24cm

31 A 20th century Indian Agra alabaster vase, gilt and enamel decorated with a peacock, height 31cm

32 A Chinese celadon crackle glazed bowl, with moulded high relief Chi dragon decoration, dia.24cm (a/f)

- 33 An early 20th century French coffee grinder, bearing label for Peugeot Frerre, h.20cm; together with an Odax French coffee grinder (2)
- 34 A Staffordshire theatrical pottery figure of a bullfighter, h.29cm; together with two others (3)
- 35 A novelty painted table-top cabinet in the form of a petrol pump, the interior fitted with shelves, h.51cm
- 36 A collection of polished hardstone specimen eggs, to include rose quartz, agate and serpentine, in a wooden bowl; together with a polished agate dish and specimen
- 37 An antique sandstone block carved with a cross, h.17cm
- 38 A bronze figure of a mounted jockey, on an oval naturalistic base, h.20cm
- 39 A Chinese polychrome porcelain teapot, h.22cm
- 40 A 20th century art glass paperweight, h.14cm
- 41 A natural chrysocolla geode, mounted on a polished square hardstone plinth, h.22cm
- 42 A 19th Century evangelical pottery bust of Jesus Christ, h.32cm
- 43 A pair of cranberry glass decanters in the form of skulls, h.17cm
- 44 A 19th century Chinese porcelain jar and cover, enamel decorated with flowers and insects (a/f), h.33cm
- 45 A gilt metal figure of Guanyin, h.27.5cm
- 46 A Kieninger lacquered brass mantel clock, late 20th century, having a three train eight-day Grande Sonnerie musical movement striking eight hammers on gongs, silvered chapter ring and subsidiary seconds dial, all in glazed case, backplate numbered J0208 and signed Kieninger Made in Germany, h.20cm
- 47 A set of four early 20th century brass candlesticks, in the manner of Benham & Froud, each having a beaded scone on a knopped stem, to a circular weighted base, h.37.5cm
- 48 An enamel on metal sign for Ox-heart Peanut Butter, 20 x 10cm
- 49 A bronzed metal and cloisonne figure of a seated Buddha, h.21cm
- 50 A 19th century transfer decorated pearlware plate in the Palladian Porch pattern, dia.24.5cm; together with a 20th century Greys Pottery hand-painted plate, decorated with flowers, signed Betty (2)
- 51 A Chinese porcelain vase, of baluster shape, enamel decorated with chrysanthemums within a shaped cartouche on a blue ground (a/f), h.37cm
- 52 A verdigris metal Buddha's head, h.30cm
- 53 A pair of continental pottery figures of a lady and gentleman, each shown in 18th century dress on floral encrusted base, h.54cm; together with a pair of continental porcelain table centrepieces
- 54 A Chinese pottery jardiniere of cylindrical shape decorated with birds amongst flowers, height 22.5cm
- 55 An eastern carved hardwood table cigarette box, the hinged lid opening to reveal a fitted interior, width 25cm
- 56 A Napoleon III style brass cased mantel clock, case surmounted by pineapple finial, the dial with Roman numerals and painted cherub to centre, above porcelain panel painted with figures, having an eight day movement, striking on a bell, height 45cm
- 57 A pair of large blue glass bottles and stoppers, height 37cm
- 58 Four Wade NatWest piggy banks (one a/f), largest 17cm
- 59 A lacquered hardstone inset terrestrial table globe on a chromed octagonal base, height 35cm
- 60 A pair of novelty cast iron bookends each in the form of a jack russell
- 61 An early 20th century oak music box in the form of a barrel, height 13cm
- 62 An early 20th century French gilt metal three-piece figural clock garniture having an enamel dial showing Roman numerals and signed Henry Marc, Paris, having an eight day drum movement, striking on a bell, h. 28cm
- 63 A pair of black painted carriage lamps, height 21cm
- 64 A pair of cut cranberry and clear glass decanters, and stoppers, height 41cm
- 65 A model of the Cutty Sark contained within a glass jar, height 20cm
- 66 A painted cast iron figure of a cricketer, height 33cm
- 67 A novelty plated cocktail shaker in the form of a lighthouse, height 35cm
- 68 A West German pottery vase, of tapered cylindrical form, having a recessed neck and orange and brown mottled glaze, h.32cm
- 69 A WWI trench art shell case vase, with repousse & stipple vine decoration, inscribed Reims, h.23cm
- 70 A red velvet fez, embroidered with a beaded coat of arms, maker Topiwala, Dilabh, Motiram Brothers, PO Box 383 Zanzibar

- 71 An early 20th century aluminium figure of a French policeman (traffic officer), mounted on an oak socle base, h.31cm
- 72 An enamel on metal Volkswagen advertising sign, 14 x 9cm; together with another for Continental Tyres (2)
- 73 A cut glass ships decanter and stopper, h.26cm; together with a cut glass mallet shaped decanter and stopper; and two others (4)
- 74 A 20th century mah-jong set, in a fitted hardwood box, w.23cm
- 75 A Chinese porcelain vase, of bulbous form, enamel decorated with chrysanthemums, h.41cm
- 77 A Regency rosewood and boxwood strung tea caddy, having inset ivory roundels and an ivory escutcheon, the hinged lid opening to reveal a fitted interior, standing on four bun feet, w.29cm  
Ivory submission ref: 9J9T7D6Q
- 78 An early 19th century partridge wood and boxwood strung tea caddy, of sarcophagus form, the hinged lid lifting to reveal a fitted interior, having diamond shaped ivory escutcheons and standing on four bun feet, w.19cm  
Ivory submission ref: M4RHYVAH
- 79 A collection of brassware, to include two Victorian brass table candlesticks and two pierced brass trivets
- 80 A collection of fishing reels (11)
- 81 A collection of fishing reels (8)
- 82 A collection of Venetian style drinking glasses, each having a gilt decorated rim
- 83 A collection of Victorian and later Staffordshire pottery, to include animal figures and architectural models
- 84 A collection of Asian items, to include Chinese porcelain ginger jars and a Chinese prunus pattern vase
- 85 A collection of Asian items, to include a cloisonne enamelled box and a graduated set of metal opium weights
- 86 A collection of 18th century and later Chinese ceramics, to include a blue and crackle glaze sleeve vase
- 87 A collection of Chinese ceramics to include a blue and white porcelain plate and a ginger jar
- 88 A collection of Asian items to include a pair of Chinese Canton porcelain vases (a/f), and a polished hardstone seal
- 89 A Poole pottery Aegean fruit bowl, together with two further pieces Poole pottery
- 90 A collection of Maling lustre ware ice cream bowls
- 91 Miscellaneous items to include cigarette cards and lead painted figures
- 92 A large collection of mainly Edwardian postcards, to include military, architectural, topographical and real photographic.
- 93 A collection of horse brasses
- 94 A late 19th Century hand carved and painted wooden puppet, probably North African ; together with two paper puppets
- 95 Various cigarette cards to include Will's and Churchill; together with postcards
- 96 A collection of Japanese paintings
- 97 Vintage postcards and ephemera, to include portrait and topographical examples
- 98 A collection of corkscrews, to include novelty examples; together with a related book
- 99 A collection of photography equipment to include a Pentax SP500 SLR camera and an Auto Tamron zoom 220mm lens
- 100 A collection of three U.S. window card posters, to include Man's Favorite Sport? (1964), The Tanished Angels (1957) and The Spiral Road (1962), 56 x 36cm, together with a collection of Belgian posters to include Come September (1961), Man's Favorite Sport? (1964), Pillow Talk (1959), Blindfold (1966), Magnificent Obsession (1954), A Gathering Of Eagles (1963), Send Me No Flowers (1964), A Very Special Favor (1965), April In Paris (1952), Lucky Me (1954) and I'll See You In My Dreams (1951), mostly 53 x 35cm and 36 x 54cm. (rolled) (14)
- 101 A collection of photography equipment to include a Sunagor 300mm macro camera lens
- 102 A vintage brass gong, dia.52cm
- 104 A collection of 18th century and later ceramics and metalwares, to include a Caughley blue and white porcelain tea bowl and other tea bowls, a pearlware pickle dish, two tin-glazed jugs, pewter flagon, and Chinese porcelain teabowls
- 105 A collection of Asian items to include a Chinese blanc de chine figure, metal bells and four brass plinths
- 106 A large collection of vintage Giles comics
- 107 Miscellaneous items to include a brass anniversary clock, further clock parts and metalware
- 108 Vintage LPs, to include Phil Collins, Bruce Springsteen and Dire Straits
- 109 A collection of vintage moulding planes
- 110 A collection of vintage LPs, to include Peggy Lee, Mike Harding and Eddie Murphy

111 A glass vase, in the form of a top-hat, h.18cm; together with two glass jugs; and a bowl (4)

112 A Villeroy & Boch Laura pattern dinner service

113 Glassware and ceramics, to include a Staffordshire model of a spaniel, a Royal Doulton figure of Monica, jasperware etc

114 A vintage tan leather briefcase

115 Three boxes of light fittings, to include a Victorian brass hanging oil lamp

116 A collection of vintage police and military uniforms

117 An Asian carved hardwood figure of Buddha, h.71cm

119 A large Chinese blue and white crackle glazed vase, decorated with figures, h.60cm

### **Approx 11am**

120 A Troughton & Simms of London brass theodolite, h.41cm, cased

121 A pair of gilt table lamps with shades, each h.66cm

122 A pair of large Chinese porcelain vases, each of globular form, enamel decorated with flowers, h.55cm

123 A Victorian family Bible, bound in gilt-tooled black leather

124 An Art Deco style metal desk lamp, h.38cm

125 A Derby Daisy pattern part tea service

126 A Victorian floral decorated dessert service

127 An early 20th century oak cased mantel clock, h.23cm; together with another similar example; and a wall clock (3)

128 A carved oak panel, decorated with foliage, 36 x 19cm; together with a carved oak corner bracket, h.37cm (2)

129 A blue and white pottery wall plaque, decorated with children, unmarked, 24 x 19cm, housed in a gilt frame

130 A pair of German figural porcelain table candelabra, each h.54cm

131 A pair of bisque porcelain figures, each shown in 18th century dress, each housed beneath a glass dome, dome h.52cm

132 A Capo di Monte six-place tea service

133 A Victorian brass oil lamp, having a milk glass shade, h.47cm; together with another Victorian brass oil lamp, having a cranberry glass font, h.43cm (2)

134 A Victorian Holy Bible, bound in gilt-tooled black leather; together with another 19th century Bible (2)

135 A pair of Victorian brass oil lamps, each having a milk glass shade and cranberry glass font, h.57cm

136 A collection of four German porcelain figure groups, each shown in 18th century dress, the largest h.28cm

137 A Chinese porcelain fish bowl, Republic period, circa 1930, enamel decorated with horses before trees, h.36cm, dia.42cm, upon a carved hardwood stand

138 A Victorian walnut and brass bound writing slope, the lid lifting to reveal a gilt-tooled green leather lined writing surface

139 A vintage ESSO advertising fuel can, h.32cm

140 A double sided silk advertising flag for Wakefield Castrol Motor Oil, bearing a label for C C Wakefield & Co 27 Cannon Street London E.C., 59 x 93cm.

141 A collection of glass magic lantern slides, mainly topographical

142 A collection of four Japanese lacquered boxes, each typically decorated in gilt, the largest w.27cm

143 A Victorian copper range kettle, h.35cm; together with two Victorian copper measuring jugs, the largest h.26cm (3)

144 A set of four vintage road lamps, each h.30cm

145 A Japanese lacquered photograph album (lacking contents)

146 A 20th century table-top barograph, h.17.5cm, w.34cm, d.17cm

147 A doubled sided flag for Volkswagen Motors, of cotton construction with central VW Windmill logo and various markings to the lanyard, 60 x 92cm.

148 A pair of Schierholz porcelain three branch figural table candelabra, late 19th century, each encrusted with fruit and flowers, crosshatch mark to the underside, h.53cm

149 A pair of Caughley table baskets, circa 1785, of open trellis form, transfer decorated in in the pinecone pattern, each w.25cm

150 Jean Garnier (1853-1910) - a pair of Art Nouveau patinated Art Metal oval plaques, each modelled with a stylised female nude lying figure, signed 'J. Garnier' to one edge, further raised foundry marks verso, each 19.5 x 30cm

151 A Royal Worcester blush ivory pot pourri, circa 1895, shape 1286, decorated with flowers, puce mark, h.18cm, together with a pair of Royal

- Worcester blush ivory vases and covers, circa 1895, shape 1626, decorated with flowers, puce mark, each h.26cm (3)
- 152 A blue jasperware cheese dome, decorated with classical figures, dia.24cm
- 153 An Art Deco style bronze figure of a lady, mounted upon a rouge marble plinth, h.56cm
- 154 A collection of Royal Copenhagen blue half lace pattern dinnerwares, comprising a tureen, meat plate, sauce boat, serving plate and pepper (5)
- 155 A pair of spelter models of the Marly horses, h.44cm
- 156 A collection of five Royal Doulton, Coalport and Royal Worcester porcelain figures of ladies, to include Royal Worcester Destiny limited edition 841/1000, h.26cm
- 157 Two vintage bill hooks, the largest 44cm
- 158 A circa 1930s Royal Lancastrian large pottery squat vase, all-over green monochrome decorated, impressed marks and numbered 2406 verso, h.14.5cm, dia.27cm; together with two smaller Royal Lancastrian green monochrome decorated pottery squat vases, one of bulbous form (with damage to body), numbered 2505, h.10cm, the other of Chinese lower bellied form, h.8.8cm (3)
- 159 The late Reverend John Brown; The self-interpreting Bible, with an evangelical commentary, London, Thomas Kelly, bound in gilt-tooled tan leather, one volume
- 160 A Hopf violin, having a two-piece front and back, length 58cm, cased with bow
- 161 A 19th century French porcelain mantel clock, the enamelled dial showing Roman numerals, having eight-day movement, the Rococo style case decorated with flowers, h.41cm (including stand)
- 162 An Edwardian mahogany table-top chest, the hinged lid above two short drawers, w.63cm
- 163 A model traction steam engine, constructed from chains and screws, mounted upon a wooden plinth, h.35cm
- 164 An enamel on metal sign inscribed Sealed Power Authorised Service, h.28cm
- 165 A Victorian family Bible, bound in gilt-tooled black leather with brass mounts; together with an iron bookpress
- 166 A German pottery beerstein, relief decorated with figures, h.47cm; together with another smaller (2)
- 167 A Schott Zwiesel amber glass bowl, dia.31cm
- 168 A pair of Japanese satsuma vases, each h.40cm; together with a pair of Japanese satsuma vases, each h.23cm
- 169 A plated metal table lamp in the form of a Corinthian column, h.26cm (including shade)
- 170 An enamel sign inscribed GMC Sales & Service Trucks, dia.30cm
- 171 A 19th century French brass and alabaster mantel clock, the enamelled dial showing Roman numerals and inscribed Rollin Paris, the eight-day movement striking on two bells, the base mounted with portrait plaque, all housed under a glass dome, h.41cm
- 172 A Chinese hardwood abacus, inset with coins, w.41cm
- 173 A late 19th century continental brass pedestal alms dish, the centre decorated with a portrait roundel within leaf and flower border and raised beaded edge, dia.32.5cm
- 174 A Royal Doulton floral decorated bowl, dia.25cm; together with a Karl Ens model of an owl, h.26cm; a Royal Doulton figure 'Spring Flowers', h.19cm; and a bisque porcelain model of a kestrel, h.17cm (4)
- 175 A bronzed metal figure group, h.46cm
- 176 Two painted terracotta models of winged feet, h.41cm
- 177 A 20th century monocular microscope, h.35cm; together with a Pathéscope, h.33cm; and a small brass monocular microscope, h.15cm (3)
- 178 A Wedgwood blue jasperware jardiniere, relief decorated with classical figures and fruiting swags, h.23cm
- 179 A Middle Eastern brass samovar, h.57cm
- 180 A Chinese porcelain ginger jar, of globular form, enamel decorated with flowers, h.27cm
- 181 A mahogany cased set of brass scales, h.51cm, w.43cm, d.29cm
- 182 A 19th century brass table lamp in the form of a reeded column, standing upon three paw feet, h.40cm
- 183 A Copeland parian bust of Queen Victoria, h.29cm
- 184 A composite stickstand in the form of a pair of boots, h.53cm
- 185 A pottery bust of David, h.60cm
- 186 A pair of verdigris metal hanging lanterns, each h.56cm
- 187 Four boxes of mixed ceramics and metalware, to include a jasperware table candlestick and teawares
- 188 Miscellaneous items to include a 19th century mahogany box and ceramics



- 189 Nolan, Edward: The History of the British Empire in India and the East. James S. Virtue, in red publishers cloth with gilt titles, together with various other volumes to include De Couvrey, Louvet: Les Amours Du Chevalier De Faublas, New edition, 1821 vols I-IV and Kelly's Directory of Norfolk 1904 etc. (one box)
- 190 A collection of mixed service uniforms
- 191 A graduated set of two blue and white transfer decorated foot baths, the largest w.45cm
- 192 A collection of mixed service uniforms
- 193 Two boxes of glassware and stoneware, to include decanters and coloured glass bottles
- 194 A collection of vintage linen, to include a christening gown
- 195 A box of metalware, to include a large brass teapot and fire tools
- 196 A collection of world stamps, many housed in albums, some loose
- 197 A box of books to include signed first editions by Arthur Bryant
- 198 Cliff Richard, a collection of LP's to include Silver (box-set), Love Songs, Wired For Sound, I'm No Hero and From A Distance, concert/theatre programmes to include Heathcliff, Hit List Tour and 75th Birthday, and 7" singles Devil Woman, Miss You Nights and Power To All Our Friends, together with various other LP's to include Wings - Band On The Run & Venus And Mars, Paul McCartney - Tug Of War, David Essex - All The Fun Of The Fair and 7" singles to include Abba - Fernando and Waterloo etc. (16 LP's, 5 programmes (all Cliff Richard) and 66 7")
- 199 A collection of assorted Beatles calendars, dating from circa 1990-2014, some duplicates, mostly sealed (approx 38)
- 200 Two boxes of shells and fossils
- 201 A Stentor students violin, cased with bow
- 202 Two boxes of mixed metalware, to include brass and copper items
- 203 Two boxes of books relating to pipes and smoking accessories
- 204 A collection of books, mainly relating to the history of East Anglia
- 205 A collection of stuffed toys, to include a Steiff kitten, Steiff hedgehog, and a clockwork bear
- 206 A Chinese blue and white ginger jar, h.16cm; together with a Japanese porcelain dish, 35 x 36cm; and a Chinese blue and white cylinder vase (3)
- 208 Two boxes to include a Victorian brass oil lamp and various light shades
- 209 Two boxes of glass and ceramics, to include decanters and studio pottery jugs
- 210 A Doulton Lambeth stoneware jug, relief decorated with foliage, numbered 9184, height 16cm
- 211 A glass sweetmeat, 18th century style, the pan topped round funnel bowl above a flattened knob and wrythen knob, h.13cm
- 212 A cast brass pestle and mortar, in the 17th century style, height of mortar 10cm
- 213 A Chinese miniature porcelain double gourd vase, height 9cm, together with two others
- 214 A pair of Japanese bronze vases, each decorated in high relief with a dragon, height 13cm, together with another decorated in relief with a bird amongst prunus blossom
- 215 A pair of Sevres porcelain vases, 19th century, each decorated with children in 18th century dress within an oval cartouche upon a blue ground, h.16cm
- 216 A Japanese teacup and saucer, enamel and gilt decorated with chrysanthemums, bearing a two-character mark to the underside
- 217 A Victorian style novelty metal mounted cranberry glass decanter in the form of a cockatoo, height 15cm
- 218 An 18th century Chinese porcelain plate enamel decorated with flowers, dia.22.5cm, together with two others
- 219 A Chinese turquoise glazed double gourd porcelain vase, bearing four character mark to the underside, height 18cm
- 220 A bronzed figure of a Tibetan deity, height 10.5cm
- 221 A pair of Villeroy & Boch blue & white transfer decorated vases of ovoid pedestal shape, height 17cm
- 222 A pair of Chinese blue & white porcelain vases in the Prunus pattern, each of inverse baluster shape having a flared rim, height 14.5cm
- 223 A Chinese blue & white porcelain saucer having a pointed lobed rim, and decorated with scholars seated in a garden, 12.5cm dia, together with four others
- 224 A 19th century porcelain bocage figure, having gold anchor mark to the reverse, height 9cm, together with a Staffordshire figure of a gentleman, height 17cm, and three basket weave cream ware side plates, dia. 21cm (a/f) (5)
- 225 A pair of African carved wooden figural spoons, length 25cm
- 226 A 19th century Staffordshire spill vase in the form of a reclining lady before a tree, height 13cm, together with a Staffordshire figure and a

pearlware figure of a lady holding a basket of apples

227 A Spode Italian pattern bowl, 27cm dia.

228 A collection of 20th century coloured glass paperweights, to include a Caithness limited edition example

229 A Swarovski crystal model of a pig, together with other Swarovski and glass models

230 A Chinese hardstone carving of a peach, fixed to a carved hardwood stand, height 26cm, together with a pair of Chinese cloisonne enamel dishes, each decorated with a dragon

231 A Royal Copenhagen porcelain figure of a drake, length 9.5cm, together with a Royal Copenhagen figure of a mermaid holding a fish, and another of an otter with a fish in its mouth (a/f), a Royal Doulton figure of a cat, and three Wade figures of dogs

232 A Chinese carved hardstone urn and cover, the lid surmounted by a mythical bird, the urn flanked with dragon handles on hardwood stand, height 23cm

233 A Doulton Lambeth stoneware vase scraffito decorated with scrolling leaves by Emily E Stomer, height 24cm (a/f)

234 A French porcelain and gilt metal pot purri, probably Sevres, 19th century, enamel decorated with flowers, h.32cm

235 A French Art Deco patinated bronze figure of Astarte, modelled as a semi-nude stylised standing woman dressed in robes, to a triangular titled plinth, raised on further integral verdigris marble square stepped high base, overall h.31cm

236 A Chinese porcelain vase and cover in the blue & white Prunus pattern, the cover surmounted by a Dog of Fo, height 30cm, together with another Chinese vase

237 A pair of Chinese porcelain vases, in the Prunus pattern of inverted baluster shape, each on a flared rim, height 20cm, together with a pair of Prunus pattern ginger jars with hardwood covers

238 A Mdina glass vase with green relief decoration, together with two Caithness commemorative glass paperweights inscribed "We Came in Peace for All Mankind, July 1969 AD", and a Martin Yeates glass vase

239 A Royal Albert Beatrix Potter figure being Benjamin Ate a Lettuce Leaf, height 12cm, together with five other Beatrix Potter figures, to include Beswick and Royal Doulton, and a Beswick pottery figure of an owl (7)

#### Approx 12noon

240 An Ewenny pottery piggy bank, shown in seated pose, having a mottled yellow and green

glaze and sgraffito decoration, inscribed 'Ewenny Pottery' and dated 1901 to the underside, h.10cm

242 A collection of nine Coalport porcelain figures of ladies, to include Loretta and Chelsea, largest height 13cm

243 A Royal Dux figure of an elephant shown standing with trunk raised, height 14cm (a/f), together with a Beswick pottery figure of an elephant, and a Beswick cow (3)

244 A Dresden style porcelain table centrepiece, the lattice form with floral encrusted decoration, standing on four winged cherub supports, height 13cm

245 A 20th century blue Studio glass spiral, height 19cm, together with further coloured Studio glass bowls, and a paperweight (4)

246 A Royal Doulton porcelain figure of a lady 'Lorna' height 21cm, together with a Sylvac character jug, Chinese blue & white dishes, and a Royal Doulton Bunnikins money bank

247 A Beswick pottery figure of a red cardinal shown on a naturalistic base, height 15cm, together with a Beswick figure of a terrier playing with a ball and two Beswick horses

248 An 18th century English delft charger, having a central cartouche decorated with a pagoda, on a manganese ground, dia.29cm (a/f)

250 A German porcelain figure of a lady standing beside an easel and holding a palette; together with another of a lady sculpting a bust, h.20cm

251 A Royal Worcester Old Ivory jug, shape No.1185; together with a Wedgwood jasperware vase, h.19cm

252 A pair of Delft sleeve vases, each having a flared rim and decorated with a bridge in a landscape (one a/f), h.20.5cm

253 A Chinese red glazed porcelain pedestal dish, enamel decorated with chrysanthemums, bearing six character mark to the underside, dia.19.5cm

254 A Japanese brass koro, the pierced lid surmounted by pine cone finial, the body with a band of engraved floral decoration, standing on three pine cone feet, h.18cm

255 An Indian clay figure of a seated deity, mounted on a hardwood plinth, h.19cm

256 A Chinese porcelain ginger jar and cover, decorated with dragon amongst clouds, having a hardwood cover and standing on an associated wooden base, h.21cm

257 A composite bust of a gorilla dressed as an admiral, h.25cm; together with a composite plaque with royal coat of arms

- 259 A Waterford crystal model of an elephant, height 7cm, together with another of a dog, a Waterford crystal heart shaped picture frame (3)
- 260 An 18th century Lowestoft porcelain coffee can, together with two Chinese famille rose porcelain tea bowls and a famille rose porcelain saucer
- 261 A modern Caithness vase of wrythen baluster form with black & white stripe swirling inclusions, height 20cm, together with one other similar example with pink swirl finish, and various other art glass vases (8)
- 262 A Royal Doulton figure 'Balloon Girl' HN2818, height 16cm, together with one other 'Biddy Penny Farthing' HN1843, height 22cm
- 263 A pair of Chinese porcelain vases, enamel decorated with pink flowers on a red ground, having blue seal mark verso, height 23cm
- 264 A polished green hardstone model of a bird, height 10cm, together with various other polished hardstone figures to include dog, shi-shi, elephant calf, and turtle (5)
- 265 An early 20th century Sitzendorf porcelain figure of a girl with basket of fruit on a naturalistic base with printed mark verso, height 14.5cm together with two other Sitzendorf porcelain figures and a set of four continental porcelain figures of children, height 10cm (7)
- 266 A late 18th century Cowley blue & white porcelain pickle dish, underglaze decorated in the Chinese style with a figure upon a junk in a river landscape, width 12.5cm (restored)
- 267 A late 18th century Lowestoft porcelain patty pan, underglaze decorated to the centre with a butterfly within a border of flowers, unmarked (heavily damaged), dia. 11.5cm
- 268 A Chinese export porcelain dish underglaze blue decorated with a four claw dragon within clouds chasing a mythical pearl, dia. 20cm
- 269 A collection of five Beswick Beatrix Potter figures to include Mrs Rabbit, Tom Kitten in the Rockery, Peter Rabbit x2, Peter Rabbit Gardening, and Mr Benjamin Bunny, together with one other Royal Albert example of Jemima Puddleduck (6)
- 270 A 19th century Quimper faience pottery wall pocket in the form of two cornucopia, painted with a figure, flowers and cockerel, height 28cm
- 271 A set of three 18th century Dutch Deft tiles, each having an hexagonal shaped central panel underglazed blue decorated with landscapes within further puce border, 12.6x12.6cm (a/f)
- 272 An 18th century English Delft plate underglaze blue decorated with two figures before a building within a landscape, dia. 22.5cm
- 273 A Border Fine Arts Beatrix Potter Classics figure 'Hunca Munca sweeping', No.A8909;
- together with three other Beatrix Potter figures to include The Old Woman who lived in a shoe A8911, Tom Kitten A7632, and The World of Beatrix Potter Jemima Puddleduck 27199; and a pair of Beatrix Potter money-boxes. (5)
- 274 A matched pair of Chinese Canton export bowls, each enamel decorated in the famille vert palette with panels of flowers and foliage, dia.20.5cm
- 275 An Elizabeth II silver tankard, of bell shape, with flying C-scroll handle and presentation inscription, 11.2ozt
- 276 A pair of George V silver table candlesticks, in the neo-classical style, with weighted bases, h.11.5cm
- 277 A large early 20th century silver plated jug, having a domed top with squat finial, the baluster body with three bands of engine turned decoration and further engraved armorial, h.32cm
- 278 A Victorian silver plated six-place cruet stand, having a shell cast and gadrooned border, on squat bun feet, containing six pink tinted cut glass bottles, h.23cm
- 279 A pair of claret jugs in the 18th century style, each having a tapering cut glass body with silver plated mounts, Bacchus spout and C-scroll handle, h.28cm; together with one other single example; and a cocktail shaker
- 280 A part-suite of silver plated cutlery, the knives having steel blades marked J Nowill & Sons of Sheffield
- 281 A pair of late Victorian silver two-branch candelabra sconces, maker Goldsmiths & Silversmiths Company Ltd, London 1901, 23.1ozt
- 282 A collection of miscellaneous items to include a late 19th century gilt metal cased pocket barometer, the silvered dial compensated for temperature, by Short & Mason of London, No.E12249, 5cm (excluding dial); four miniature brass carriage timepieces; plated napkin rings etc
- 284 A Christofle of France silver plated oval serving platter, having a raised and reeded rim, stamped verso, w.44.8cm; together with another smaller, 44.5cm; and a pair of matching circular dishes, measuring 35cm and 32.5cm (4)
- 285 A collection of silver plated items to include tray, bonbon dish, and butter dish
- 286 A collection of miscellaneous silver plated wares, to include a comport, loose flatware, water jug etc
- 287 A Victorian oak desk stand, with single drawer below, lacking bottles; together with a pewter clad table cigarette box; various other boxes and canisters (two boxes)
- 288 A small collection of miscellaneous silver plated wares, to include a set of six place setting

holders, open salt with matching mustard, loose flatware etc

289 A box of miscellaneous silver plated wares, to include a pair of Old Sheffield plate table candlesticks, two other pairs of table candlesticks, teapots etc

290 A box of miscellaneous metalware, to include entree dish, trophy cups, goblets etc

291 A modern Arthur Price of England 8-place setting canteen of silver plated cutlery

292 A 19th century Russian silver and niello three-piece tea flatware set, comprising tea scoop, tea strainer and sugar tongs, each piece marked 'ЯЛТА' (Yalta in Cyrillic), having spiral turned stems and stylised floral niello decoration, marks worn but the scoop showing 84 silver standard (head facing left) and HM stamp, strainer length 15.5cm, gross weight 3.3ozt

293 An Edwardian silver mustard, of pierced circular form, with associated silver spoon and blue glass liner, Stokes & Ireland, London 1902, mustard weight only 2.3ozt

294 A George III silver miniature cream jug, of baluster form, having fluted and beaded repousse decoration, marks worn but possibly David Mowden, London 1769, 2.8ozt, h.10cm

295 A pair of white metal wick scissors, in the form of a stork, 1.3ozt, h.9cm

297 A set of six silver teaspoons, each decorated with golf clubs, Walker & Hall, Sheffield 1933, 2.6ozt

298 A Victorian silver jug, Sheffield 1885, 2.4ozt; together with a pair of silver pepper shakers, marks rubbed, 2.8ozt (3)

299 A Victorian repousse decorated silver hat-pin stand; together with a collection of various hat-pins

300 A George V silver christening tankard, London 1935, 4.4ozt; together with a Victorian silver christening mug, London 1849, 4.4ozt (2)

301 A George V silver chocolate pot, of baluster form, having ebonised finial and handle, Chester 1912, 6.7ozt

302 A pair of Victorian silver christening tankards, each Sheffield 1869 and 4.4ozt

303 An Elizabeth II silver lighthouse sifter, of baluster form, Birmingham 1964, 4ozt

304 An Elizabeth II silver strainer, Birmingham 1988, 2.9ozt

306 An early 20th century sterling silver and enamelled brooch in the form of a butterfly, numbered verso 1085, maker John Atkin & Son, w.3.6cm, together with three other brooches to include two dancers and a terrier. (4)

307 A George V novelty silver desk ornament, naturalistically modelled as a Pekingese dog in seated pose, mounted on a polished hardstone base, maker M & Co., Chester, 1910, w.6cm.

308 A pair of Victorian silver mustards, London 1899; together with a pair of silver peppers, London 1899, gross weight 10.2ozt

309 A Victorian silver vesta case, Birmingham 1897; together with another repousse decorated with a stag, 1.4ozt gross (2)

310 A collection of 19th century and later silver tea and mustard spoons, gross weight 4.3ozt

311 An Elizabeth II silver handled bread knife, Sheffield 1994

312 A Victorian white metal snuff box, decorated with flowers, 1.8ozt

313 A set of six Elizabeth II silver-gilt teaspoons, each having floral enamel decoration to the bowl, Birmingham 1959; together with a George V pierced silver bonbon dish; and a modern hammer-beaten silver teaspoon stamped 925

314 A Victorian silver and mother of pearl child's rattle, 1.8ozt

315 Two silver napkin rings, together with a set of six 19th century silver plated teaspoons (8)

316 A collection of three modern silver crucifix pendants, gross 1ozt; together with a pewter example (4)

317 A Victorian silver vesta case; together with a silver and mother of pearl handled fruit knife; and a white metal propelling pencil (3)

318 A George V silver cigarette case, Birmingham 1926; together with two silver decanter labels; a silver arched photograph frame; and two racing related tie-clips

319 A collection of silver items, to include a strainer, sifting spoon, sugar nips, and various spoons, gross weight 8.8ozt

320 A George V scent bottle, having a facet cut clear glass body with silver cap and yellow guilloche enamelled top, h.6.5cm; together with a George V silver trinket box, of circular form, the hinged cover inset with a polished hardstone having green seaweed type inclusions; another silver trinket box; and a cut glass dressing table jar with silver cover (4)

321 An early 20th century Indian white metal tankard, having all-over repousse floral scrolling decoration, the handle in the form of a serpent; together with a silver christening set comprising fork, spoon and associated mother of pearl handled knife (lacking case); and a silver plated sauceboat, weighable silver 7.7ozt (excluding knife)

- 322 An early 20th century silver and yellow metal brooch, in the form of an artillery sword applied with a heart, shield and flowers, 5.6cm; together with various other silver and white metal brooches to include polished agate Celtic style example, Scottish thistle etc (14)
- 323 A small collection of souvenir and other spoons, to include continental white metal and plated examples
- 324 A late 19th century lady's silver cased open faced fob watch, having an enamelled dial with Roman numerals, keyless movement, on a white metal curb link Albert chain with T bar
- 325 A 19th century openwork fob pendant, decorated with an urn issuing flowers, together with three silver fob medals (one with yellow metal shield); and a silver ingot pendant (5)
- 326 An early 20th century silver nurse's buckle, of two-piece construction, having floral C-scrolling decoration, w.8cm; together with one other silver nurse's buckle, 2.6ozt (2)
- 327 An early 20th century gilt metal and enamelled lapel badge for The Royal Scots Fusiliers Old Comrades of London, maker Thomas Fattorini Ltd, Regent Street, London & Birmingham; together with a cap badge for the Norfolk Regiment; a lapel badge for the Royal Army Service Corps; and a Kings Crown collar badge (4)
- 328 An early 20th century continental silver novelty pin cushion in the form of a chick, marks rubbed, w.3cm
- 329 A late Victorian silver two-piece cruet, to include open salt and mustard, each of pierced form with blue glass liner; together with a similar pedestal pepperette
- 330 A small collection of miscellaneous items, to include a white metal locket in the form of a book, a heart shaped locket, child's rattle in the form of a bear; silver bangle etc
- 331 An Edwardian silver trinket dish, of heart shape with pinched rim; together with a Charles Horner silver thimble; various other thimbles; and a simulated ivory needle and thread case of acorn shape
- 332 A set of three Victorian silver tablespoons, in the Fiddle pattern; together with a pair of George V silver sugar tongs, 5.6ozt
- 333 An early 20th century amethyst tinted glass scent bottle, white metal overlaid with leaves and flowers; and Edwardian silver vesta; 19th century silver preserve spoon; silver teaspoon; and napkin rings etc
- 334 A set of six George V silver teaspoons, Martin Hall & Co Ltd, Sheffield 1926, in fitted leather case
- 335 A late Victorian scent bottle, having a facet cut clear glass body with silver cap; together with a George V silver christening tankard, of bell shape, with C-scroll handle, in fitted leather case; and a George V clear glass and silver mounted coaster, of circular form (3)
- 336 A George V silver pocket cigarette case, having foliate engraved decoration and monogrammed cartouche, with gilt-washed interior; together with a late Victorian white metal spectacle case, of rounded rectangular form, having embossed scrolling leaf decoration; and a pair of silver dwarf table candlesticks on weighted bases (4)
- 337 A Victorian style silver backed four-piece dressing table set, comprising hand mirror, hairbrush, clothes brush and comb
- 338 An Art Nouveau white metal backed clothes brush; together with a George V silver christening tankard; a white metal pedestal pepperette; a pierced white metal miniature basket; and a silver plated caddy spoon
- 339 A George III silver sifting spoon, William Eley & William Fearn; together with two pairs of 19th century silver teaspoons; and a set of six tea knives with continental white metal blades and mother of pearl handles
- 340 A set of Elizabeth II silver teaspoons, in fitted leather case; together with another cased set of six silver teaspoons; and a cased silver plated three-piece christening set (3)
- 341 A brown leather satchel, with brass fittings and embossed crowned ER II cypher
- 342 A small collection of costume jewellery, to include a lady's yellow metal and paste set dress ring, silver dress ring, simulated lapis lazuli necklace, filigree brooch etc
- 343 A collection of miscellaneous items to include American quarter dollars, Bank of England one pound notes, costume jewellery, teaspoon etc
- 344 A collection of miscellaneous costume jewellery to include a two-row black grey and white freshwater cultured pearl necklace, Whitby jet brooch, lapel badges, silver and simulated amber set dress ring etc
- 344a A modern hardwood table-top jewellery cabinet and contents, to include paste set drop pendant earrings, polished hardstone pendant on finelink chain, white metal and simulated amber set pendant etc
- 345 A gent's gold plated cased hunter pocket watch, having a circular white enamel dial with Roman numerals, subsidiary dial with Arabic numerals signed A.W.W. & Co Waltham Massachusetts; together with a base metal open faced pocket watch; gent's fashion watches etc
- 346 Great Britain, a collection of miscellaneous coins, to include Whitman's folder farthings 1937-

1956 No.9677, 2x 50th anniversary of the D-Day landings commemorative 50p, Great Britain decimal coin wallet, commemorative crowns etc

347 A faux leather clad jewellery box and contents to include a pair of 1970s gents silver cufflinks, rose quartz type necklace, cruciform pendant, etc

348 A collection of miscellaneous items to include a 1970s silver hinged bangle with floral engraved decoration, a small cameo brooch, a Victorian jubilee bar brooch, a Victorian enamelled commemorative lapel badge, etc

349 A ladies Emporio Armani steel cased tank watch having a rectangular gilt dial with Roman numerals and quartz movement on a leather strap, together with three other ladies wrist watches housed in a glazed watch display case

350 A collection of miscellaneous costume jewellery to include a heart shaped pendant on belcher link chain, wooden bangle, naval bar brooch, rope twist necklace etc

351 A collection of miscellaneous costume jewellery to include gold plated hinged bangles, paste set dress rings, pair of leaf earrings, etc

352 A white metal pocket vesta case; together with a turquoise glass scent bottle in white metal mount (2)

353 Two 9ct gold child's signet rings; together with a 9ct gold black onyx set signet ring (cut); a 9ct gold cameo set ring; and a Victorian yellow metal and opal set ring, gross weight 11g (5)

354 A 9ct gold necklace, having opal and seed pearl set pendant; together with a 9ct gold finelink necklace, gross weight 12.5g (2)

355 A modern 9ct gold curb link necklace, 7.7g, length 35cm

356 Assorted 9ct gold, to include Masonic pendant, heart shaped padlock clasp, heart shaped locket, and ropetwist necklace, gross 10g; together with a silver pendant

357 A 9ct gold opal set band ring, 4.3g, size P/Q

358 A pair of 9ct gold and cultured pearl set ear clips, with screw backs, 2.1g, pearl dia.8mm

359 An 18ct gold diamond solitaire ring, the claw set round cut weighing approx 0.1 carats, 1.8g, size R

### **Approx 1pm**

360 An 18ct gold diamond solitaire ring, the claw set round cut weighing approx 0.15 carats, 2.5g, size M

361 A white metal diamond solitaire ring, the four-claw set brilliant weighing approx 0.16 carats, stamped 10k and tests as approx 10ct gold, 1.7g, size J/K

362 A carved shell cameo pendant in 9ct gold mount and on 9ct gold finelink neck chain, 6.3g; together with a gilt metal necklace, having amethyst and seed pearl set pendant (2)

363 A lady's Rotary 9ct gold cased bracelet watch, having manual wind movement, 16.1g, case dia.18mm

364 A gilt metal sovereign type ring containing a replica of a US one dollar, size X

365 A 9ct gold cz set solitaire ring, size M; a 9ct gold garnet flower head cluster ring; and a 9ct gold pearl set half hoop ring (one seed pearl missing), gross weight 7.7g

366 An early 20th century 18ct yellow gold, ruby and diamond half hoop ring, comprising three graduated round rubies and two old European cut diamonds claw set within a carved mount, ruby dimensions between approx 2.9 x 1.2 and 3.8 x 2.5mm, total weight estimated as 0.46 carats, diamond dimensions between approx 3.25 x 2.5mm and 3.6 x 2.25mm, total weight estimated as 0.36 carats, assessed mounted collectively colour J to K and clarity I1 to I2, size Q, gross weight 3.4g, hallmarked 18ct, London 1909, sponsor WP

367 A yellow metal diamond solitaire ring, featuring an old pear cut diamond flush set within a boat shaped head, diamond dimensions approx 7.6 x 5.7 x 3mm, weight estimated as 0.80 carats, assessed mounted colour L to M and clarity I1 to I2, size L, gross weight 5.3g, not marked but tested as 15ct

368 A modern 9ct gold and smoky quartz set dress ring, 3.3g, size M

369 A modern 9ct gold, ruby and diamond point set half hoop ring, size N/O; together with a 9ct gold triple cultured pearl diamond point set dress ring; a yellow metal turquoise ring; and a 14ct gold single cultured pearl set dress ring, gross weight 8.1g (4)

370 A gent's 9ct gold signet ring; together with a 9ct gold half ropetwist ring; a 9ct gold wedding band; and a 9ct gold white sapphire set dress ring, gross weight 10.6g (4)

371 A gent's 9ct gold, black onyx and diamond point set signet ring, 6.1g, size X

372 A 22ct gold wedding band, 4.3g, size N

373 A yellow metal Georgian oval cluster ring, having a centre 18.2 x 6.4mm oval red paste stone within a border of sixteen 3.2mm half pearls, all in closed back settings with trifurcated shoulders, size L, gross weight 9.3g, not marked but tested as approx 18ct

374 An 18ct gold ring (cut and stone removed), 5.3g; together with a 22ct gold wedding band (cut), 1.6g (2)

375 A pair of 9ct gold diamond point set ear studs, 1.2g; together with other yellow metal and gilt metal earrings, pendants and a finelink neck chain

376 A yellow metal pierced band ring, unmarked but tests as approx 18ct, 4.4g, size O; together with a pierced yellow metal tapering band ring (cut), unmarked but tests as approx 9ct, 4.7g (2)

377 Assorted scrap 9ct gold, to include a pair of cufflinks, single charm, heart shaped padlock clasp, watch chain etc, 16.2g

378 Assorted gold and gilt metal, to include 18ct gold tie-pin, 1.5g; three pairs of 9ct gold ear studs, 5.9g; and a pair of gilt metal ear studs

379 A modern 9ct gold ropetwist necklace; together with a 9ct three-colour gold graduated necklet; and a 9ct gold fine chain link long necklace, gross weight 16.6g (3)

380 A pair of 9ct gold 'ball of wool' ear studs, 2.5g, dia.13mm

381 A 9ct gold finelink necklace, 1.4g; together with gilt metal and gold plated costume jewellery

382 A 9ct gold fine curblink long neck chain, 7.2g, 59cm

383 A carved shell cameo brooch in 9ct gold mount, with safety chain, 40 x 32mm; together with a 9ct gold dolphin pendant on finelink neck chain (2)

384 A cased set of Benson & Clegg brass and metal dress buttons

385 A silver gilt and opal doublet set bar brooch, as retailed by Gems TV, in box

386 Assorted 9ct gold, to include a belcher link necklace with pendant, finelink necklace with green peridot set pendant, various pendants, some scrap gold etc, gross weight 18.7g; together with sundry gilt metal costume jewellery

387 A yellow and white metal diamond circular cluster ring, comprising seven Old European cut diamonds in millegrain settings, diamond dimensions between approx 3.25 x 2.22mm and 4.62 x 3.1mm, total weight estimated as 1.71 carats, assessed mounted collectively colour K to N and clarity SI1 to SI2, size T, gross weight 2.8g, not marked but tested as 18ct

388 A modern 18ct gold brooch formed as the letter M, with bright cut engraved decoration, 2.3g

389 A 9ct gold and engraved picture locket on finelink neck chain, gross weight 5.4g

390 A carved shell cameo brooch 35x26mm in 9ct gold mount, together with one other smaller sample, again in 9ct gold mount, and a Royal Worcester porcelain brooch in gilt metal mount (3)

391 A yellow metal Victorian agate memorial brooch, featuring a banded agate within a

scrollwork surround with scrollwork centre section for hair (broken), fitted to a hook with safety chain, brooch dimensions 55 x 48mm, gross weight 19.9f, not hallmarked but tested as probably pinchbeck

392 A single row of 71 graduated jadeite beads, strung plain to a yellow metal barrel clasp, bead diameters between approx 5.85 and 11.1mm, length 53cm including clasp, gross weight 45.2g

393 A silver curb link bracelet containing large quantity of silver and white metal charms, gross weight 115g

394 A modern silver ingot pendant on belcher link neck chain, gross weight 39g

395 A continental white metal cased gents half hunter pocket watch with keywind action, dia. 45mm, on steel watch chain

396 Two silver pendants, a silver locket, neck chains etc

397 A Charles Horner silver and amethyst set brooch, Chester 1906

398 A late Victorian silver cased gents half hunter pocket watch by Hopkins & Hopkins of Dublin, case assayed Birmingham 1900, dia. 52mm, together with one other continental silver case ladies open face pocket watch (2)

399 A Tissot ladies 9ct gold cased bracelet watch having quartz movement, 17.4g, case dia. 16mm

400 A Tissot ladies vintage 9ct gold cased wrist watch having manual wind movement and on a 9ct gold snake link bracelet, gross weight 15.2g, case dia. 17mm, in Tissot leather box

401 A ladies Raymond Weil bi-metal quartz bracelet watch, having a signed mother of pearl diamond, case dia. 24mm

402 Two gents Pulsar quartz fashion watches, together with a Seiko quartz dress watch (3)

403 A Tiffany style cuff bangle, with box and bag; together with a Michael Hill silver and paste set bangle (2)

404 A Mikimoto cultured, coloured seed pearl multi string choker on 18ct gold clasp, length 40cm, in Mikimoto leather case

405 A ladies Gucci 3900L quartz fashion watch, together with one other Gucci fashion watch with quartz movement (2)

406 A gents Rotary Classic steel cased tank wrist watch having signed silvered dial with date aperture at 6 o'clock, quartz movement, and on integral bracelet, with box, together with a ladies Citizen quartz fashion watch (2)

407 An Apple 7000 Series watch with charger, 38mm case, together with a Garmin wrist watch (2)

- 408 A cased set of three silver and enamel collar studs, together with assorted costume jewellery to include Scottish silver and agate set thistle set brooch, silver cuff links, various chains, enamel propelling pencil etc
- 409 Assorted costume jewellery to include Victorian Boss brooch, glass necklace, pair faux amber ear pendants, hat pins, etc
- 410 Three Indian papier mache snuff boxes, two with polychrome and gilt decoration
- 411 A modern 9ct gold belcher link neck chain 4g, length 50cm
- 412 Victorian and later costume jewellery to include single 9ct gold garnet set ear pendant and seed pearl set brooch, semi precious set ear clips etc
- 416 A late 19th century French shot measure having an adjustable brass nozzle on turned wooden handle, 12cm, together with one other similar example (2)
- 417 A matched pair of 19th century treen novelty snuff boxes, each in the form of a shoe, with carved buckle detail and hinged compartments, length 11cm
- 418 A 19th century treen novelty snuff box in the form of a shoe with studded brass detail, length 10cm, together with one other example, length 5.5cm, and a 19th century black lacquered snuff box, the hinged lid decorated with two children, width 6cm
- 419 An early 20th century lacquered brass cased carriage timepiece having a white enamel dial with Roman numerals, visible platform lever escapement, and barrel going movement, height 12cm (handle down)
- 420 A 20th century lacquered brass cased carriage timepiece having an enamel dial with Roman numerals, visible platform lever escapement and barrel going movement, height 13cm (handle down)
- 421 A modern Chinese/Tibetan gilt metal wall plaque, the centre with relief decorated script, 10x7cm, together with one other similar example (2)
- 422 A collection of assorted ballpoint pens to include Cross examples
- 423 A lacquered brass cased carriage timepiece having an enamel dial with inner Roman numerals and outer Arabic track, having visible platform lever escapement and barrel going movement, height 13cm, excluding handle
- 424 A late 19th century Continental icon, the central bow-front porcelain panel depicting the Madonna within a gilt metal triptych surround, height 11cm.
- 424A A 19th Century Continental painted gilt wood triptych icon depicting Madonna & child Height 17 c.m
- 425 A reproduction brass model of a Hindu deity, height 13cm
- 426 A small reproduction comport, the central circular dish relief decorated with dragons supported by three dogs, height 4cm
- 427 Charles William Donaldson, (1935-2005) a British satirist under the pseudonym of Henry Root, author of The Henry Root Letters, a collection of correspondence relating to the second book The Further Root Letters, many from the publishers Weidenfeld & Nicholson, many letters appear to be from personalities in reply from Roots letters forming the basis for his books, examples include the Home Office, Victoria and Albert Museum, The Sunday Times and The Daily Mirror etc.
- 428 A Victorian silver pedestal pepperette, the pierced dome cover with ball finial, the body relief decorated with masks and swags on a raised circular foot rim, height 10cm, weight 2.6oz
- 429 A modern silver clad easel clock by Arthur Price of England, having a circular dial with Roman numerals and quartz movement, height 6.5cm, together with two travel alarm clocks (3)
- 430 An Edwardian silver scent bottle having a facet cut cranberry glass body, the silver hinged cover with floral repousse decoration opening to an inner glass stopper, height 6cm, together with various other Victorian and later scent bottles to include cut glass silver mounted and enamelled examples
- 431 A small oak box and contents to include an Edward VII Cardiff City commemorative medallion, silver and white metal fob medals, enamelled masonic lapel badge, etc
- 432 A small collection of assorted WWI military period postcards mainly being French examples, portraits, regimental and trenches some used
- 433 A gents Sekonda steel cased wrist watch, having a blue dial with raised gilt baton and Arabic markers, subsidiary dial and quartz movement on a bracelet strap, together with various other ladies and gents fashion watches
- 434 A Victorian rosewood and Tunbridgeware decorated pin box of rectangular form, annotated to the removable cover 6.5x3.5cm, together with three other Tunbridgeware boxes and two treen apothecary jars and covers
- 435 An early 20th century autograph album, the contents being stars of the stage and screen on album pages and publicity images to include Ivor Novello, Julia Neilson, Phyllis and Zena Dare, Gerald Lawrence, Madge Compton, Jane Wood, Leslie Hamilton, Henry Edwards, Chrissie White, Peggy O'Neil, Prudence Verney and Phyllis Titmuss etc., together with one other album the



contents many being theatre related some annotated with the production title. (2)

436 A metal deed box and contents to include a George V For Faithful Service in Special Constabulary medal naming Arthur T Butler, a boxed Festival of Britain Crown, Churchill commemorative crowns, Great Britain decimal coin wallets etc

437 United Kingdom proof coin collection 1987, boxed, together with one other for 1990, and a 1990 UK uncirculated coin collection (3)

438 A jewellery box and contents to include white metal and marcasite set leaf brooch, polished malachite brooch, polished hardstone bracelet etc

439 A collection of assorted coloured glass marbles in varying sizes

440 A 20th century Chinese sandalwood fan in fitted box, together with two others, and two Chinese Eight Fairies Festival books, with watercolour paintings (5)

441 Great Britain, The F.G. Cadet Stamp Album, contents Victoria - Geo. VI to include 1d blacks E/B and P/J, each with red Maltese cross cancellation stamps, slim margin to bottom edge, together with various 2d blues some affixed to envelopes and with Maltese Cross cancellation, a large collection of 1d reds, various plates and overprints, 1 d lilacs, Geo. VI 2 1/2d Victory block of six and 3d violet block of six etc.

442 A small collection of miscellaneous items to include a pair of steel buckles, enamelled brooch, faux butterscotch amber pendant, etc

443 A collection of miscellaneous items to include a gents Sekonda chronograph wrist watch, pressed brass pocket watch stand, pocket cigarette lighter etc

444 A Victorian yellow metal masonic jewel of circular form with central set square within legend Bedford Lodge 183, having presentation inscription verso dated 1851 together with various other masonic jewels to include silver gilt and base metal examples

445 A collection of miscellaneous coins to include coinage of Gt Britain to include a 1967 set of predecimal pennies, some foreign

446 A small collection of militaria to include a WWI Croix de Geurre medal, regimental photograph, military postcards etc

447 A collection of miscellaneous coins to include British Museum limited edition commemorative medallion, Britains first decimal coin wallets, 50th anniversary of the D-Day landings 50p etc

448 A 1960s Parker Flighter ballpoint pen in original box with instructions, together with a

cased yard-o-lead silver propelling pencil, and one other (3)

449 Great Britain and World, a collection of coins and banknotes, to include various decimal coin wallets, 1977 jubilee commemorative crowns, collectors coins of England booklets, Italian banknotes etc

450 A collection of modern lady's earrings, to include paste set and gold plated examples

451 A collection of assorted mainly modern costume jewellery, to include faux pearl single string necklace, white metal hinged bracelet, half hoop earrings etc

452 A collection of first day covers, mainly arranged by year from 1986; together with various Royal Mail postcards covers, loose stamp sheets etc

453 A large collection of first day covers in ring binders, dating from the 1970s and '80s, to include The Telephone invented by Alexander Graham, Bell, Christmas 1975, commission of HMS Birmingham, Silver Jubilee etc; together with a further box of first day covers and commemorative coins etc (2)

454 A collection of assorted modern costume jewellery, to include faux pearl graduated single string necklace, simulated lapis lazuli necklace, gold plated chains etc

455 A box of collectors cards, to include Brooke Bond The Sea, Inventors and Inventions, Travel through the Ages, The race into Space, History of the Motorcar etc

456 A collection of assorted world coinage, mainly being 20th century

457 A box of assorted mainly modern costume jewellery, to include fringe necklet, faux turquoise necklace, filigree work bow brooch, bar brooch, drop pendant earrings etc

458 A large collection of assorted mainly modern costume jewellery, to include filigree work flower brooch, lady's paste set earrings, faux amethyst and seed pearl brooch etc

459 A collection of miscellaneous items, mainly being travel related, to include the centennial of flight at the Rockefeller 2003 exhibition pamphlet, modern postcards, Phantasieland souvenir programme, a typed letter on Royal Air Force Museum printed paper signed Stamford Tuck, Buchenwald guide to the memorial, Air France atlas etc

460 A leather bound folio 'The St Edmundsbury Pageant 1907', containing various real photographs and postcards of the pageant (a/f)

461 A collection of mainly modern costume jewellery, to include leaf brooch, bead necklaces, gold plated chain etc

462 A Maritime Heritage folder of mint stamps, to include Maldives, Malta, Marshall Islands, US Naval Schooner etc; together with various first day covers to include the Royal Horticultural Society bi-centenary celebration Christmas 1992 etc (one box)

463 A collection of mostly British pre-decimal coinage, some in tubes, to include half-crowns, pennies and half-pennies etc; together with various commemorative crowns, Royal Bank of Scotland banknote, copper pennies etc

464 A collection of assorted treen, to include bowls and egg-cups; together with a Mauchlinware trinket box; a small moulding plane etc

465 Great Britain, an album of stamps being Elizabeth II used low denomination examples, one other album of 20th century world stamps, and various loose examples (one box)

466 A collection of cigarette cards housed in albums to include John Players International Airlines, The Kings & Queens of England, Film Stars, RAF badges, Churchmen's RAF at Work, Wills Kings & Queens etc (one box)

467 A Stratton stamp album, contents to include Great Britain Penny Red, British Empire 1924 Exhibition etc, together with four albums of assorted First Day Covers, mainly being 1970s and 80s

468 Queen, a colour image of all four band members taken by photographer Christopher Hopper for the promotion of the 1977 album News Of The World, 29x42cm.

469 A lady's black leather jacket, as marketed by Mini Motorcars, size XL

471 A reproduction walking cane having polished metal jaguar handle

472 A novelty wood carving of a skiing duck, height 23cm

473 A pair of Chinese carved wooden models of horses, the largest height 15cm

475 A painted composition footed bust in two sections, height 27cm

476 A miniature 19th century coromandel and brass inlaid travelling vanity box with inset hinge mirror, width 8.5cm, together with an olive wood and marquetry inlaid unfitted box, width 14cm (2)

477 A collection of cigarette cards to include John Player and Wills, including movie stars

478 A Reeves & Sons artist's box for watercolours, containing 12 colours, the lid being annotated, appears very little used, width 20cm

479 A collection of glass paperweights to include Stratherne examples (9)

**Approx 2pm**

480 A small collection of postcards largely being topographical examples in monochrome and colour

481 Three cigarette card albums and contents to include Players

482 An Indian hand embroidered gold and silver thread on velvet clutch bag by Zari of Delhi, together with one other similar, both boxed (2)

483 A French miniature marble backed wall pocket, together with a beaded evening bag, needlework panel, etc

484 A collection of pottery house ornaments, to include Tey Pottery of Norfolk

485 A collection of pipes of various timbers, to include one silver tipped example, some being London made

486 A pair of reproduction bronze hounds' heads on stepped polished slate plinths, height 22cm

487 A reproduction brass desk compass after the original by Stanley

488 A Japanese tin plate shovel dozer in box

489 A mid 20th century tin plate forklift truck

490 A collection of Thunderbirds toys to include Thunderbird II by Matchbox

491 A small quantity of 00 gauge rolling stock to include Exley corridor coaches (a/f)

492 Assorted early 20th century monochrome photographs to include regimental group taken at Wellington, India, June 1922

493 A Steiff commemorative bear having jointed limbs and with bow tie commemorating 100 Years 1902-2002, height 42cm

494 Assorted cigarette cards to include Wills and Major Drapkin & Co. examples

495 A shoebox containing a large collection of postcards to include topographical views, a small number of real photographs, greetings cards, etc

496 A collection of seven graduated green velvet framed convex wall mirrors, the largest dia.21cm

497 Three various Schoolboy stamp albums, together with assorted loose stamps being kiloware

498 A collection of programmes from the Royal Opera House at Covent Garden for various productions, circa 1973-76 (17)

499 A pair of reproduction military portrait prints, in gilt composition frames, 17 x 12cm

500 An imitation gold bar, 12.5kg, 20cm

501 The Sex Pistols; Never Mind the Bollocks Here's the Sex Pistols, LP, Virgin Records 1977

502 A Canon 18-135mm camera lens; together with a Canon EF50mm camera lens and one other (3)

503 A painted figure of a standing rabbit supporting a pocket watch, h.33cm

504 A cased miniature pair of 8x21 zoom binoculars; together with a cased pair of Carl Zeiss 8x30w binoculars; and a box Brownie camera in canvas case (3)

505 A pair of painted and cast metal pelican book-ends, h.14.5cm

506 A bronzed composition model of Shoulao, h.28cm

507 A composition model of a young dinosaur jaw, w.18cm

508 A Chinese export blue and white ginger jar (lacking cover), h.15cm; one other modern example; and a Chinese faux bamboo vase (3)

509 A pair of reproduction gilt composition book-ends, one with bird cage and the other with standing cat, h.25cm

510 A Chubb & Sons of London gilded metal money-box

511 A pair of gilt metal magnifying glasses, 26cm

512 Twilight For The Gods, a Universal-International Pictures Final Screenplay by Ernest K. Gann, dated September 13, 1957, hand written Rock Hudson, 132 pages in varying colours bound in burgundy card covers. After being court-martialed and discharged from the Navy, Captain Bell (Rock Hudson) turns to drink. Reduced to skippering a rundown brigantine in the South Seas, he takes on board a disparate group of passengers and crew, including a prostitute, a show-biz entrepreneur, a missionary, a washed up opera singer, a couple of refugees, and a load of copra bound for Mexico. The ship springs a leak during a storm, and the true characters of all on board are revealed as the ship tries to make port in Honolulu before it sinks; together with The Hornets Nest, a final draft screenplay by Oscar Saul January 15, 1969, Property of Triangle Productions Inc. Stanley S. Canter, the title page hand written Hudson, 148 pages with hand written notes and corrections bound in burgundy card covers. Rock Hudson starred as Captain Turner in this 1970 film that failed at the box office and after which Hudson moved to television roles; and Blindfold, a Universal City Studios Second Revised Final Screenplay by Philip Dunne and W.H. Menger, Based on the novel by Lucille Fletcher, dated February 4, 1965, hand written to the title page Jack De Mave, 128 pages bound in cream card boards with a loosely inserted Shooting Call 31st day of shooting Friday, April 2, 1965. Blindfold is a 1966 romantic comedy starring Rock Hudson and Caludia Cardinale, Jacke De Mave played the character Hombrug (3)

513 Mixed ephemera to include maps, schoolboy stamp album etc

514 A collection of postcards, to include topographical views, small number of real photographs, satirical examples; together with a small collection of bookmarks etc

515 A Victorian scrap album and contents to include letters and musings; together with a Victorian heightened engraved portrait print (2)

516 Anon: London Cries, Illustrated For The Young, London: Darton & Co., Holborn Hill, n.d. circa 1860, in publishers red cloth with embossed gilt boards, 8vo., together with various other titles to include Carroll, Lewis: Alice's Adventures In Wonderland, illus. John Tennial, McMillan & Co. 1900, and Milne, A.A.: When We Were Very Young x3 (14th, 15th and 53rd editions) etc.

517 A beechwood hinged block containing 15 graduated brass weights, from 1g to 2kg, block w.31cm

518 A collection of Victorian Staffordshire figures, to include spill-holders; together with continental soft-paste china figures etc

519 A late 17th century brass and iron warming pan, having brass mounted steel triple-ring handle, hinged lid embossed with a central star within a geometric pierced surround, dia.34cm, h.117cm (with repairs to pan bowl)

520 A shooting stick; together with two silver topped walking canes, swagger stick, replica rifle etc

521 A composition wall mask of an Eastern deity, h.55cm

522 A collection of UK Quad film, posters, to include Sisters, The Bear, Duet for One, When the Whales Came, Henry V, Always, King Ralph, Beaches, Pacific Heights, Presumed Innocent, My Blue Heaven, Dying Young, Darkman, Family Business, Butch & Sundance The Early Years, Plenty, and a My Left Foot (UK one sheet) (all folded) (17); together with A collection of assorted UK Quad film posters, being Sea of Love, Bull Durham, K-9, The Boys in Blue, Internal Affairs, A Cry in the Dark, Always, Legal Eagles, Biggles, Cadillac Man, Lady Jane, Robin Hood Prince of Thieves (teaser), Steel Magnolias, When Whales Came, Dream Child, and Duet for One (all folded) (16)

523 A collection of assorted UK Quad film posters, being Sea of Love, Bull Durham, K-9, The Boys in Blue, Internal Affairs, A Cry in the Dark, Always, Legal Eagles, Biggles, Cadillac Man, Lady Jane, Robin Hood Prince of Thieves (teaser), Steel Magnolias, When Whales Came, Dream Child, and Duet for One (all folded) (16)

524 Twin Peaks, a prop poster "Have You Seen This Man? Beware of Bob" 29.5 x 21cm; together with Jive Bunny And The Mastermixers, promotional poster for the release of the single

That's What I Like, 49 x 33cm, together with one other for Swing The Mood, 40 x 30cm, each signed Jive Bunny. (2)

525 Tommy Steele, a 28 x 20cm colour print, signed lower left, together with a similar unsigned example and various tour programmes, together with various LP's to include Master Blaster and Buddy Holly etc.

526 A small Steiff bear named Monaco from the Centenary Collection, with yellow tag in ear together with one other similar (2)

527 Showdown, 1973 Australian daybill film poster, starring Rock Hudson and Dean Martin, together with three others for Something Of Value 1957, Man's Favorite Sport 1964 and Send Me No Flowers 1964, 38 x 101cm. (folded); together with Strange Bedfellows, 1965 U.S. one sheet film poster, starring Rock Hudson and Gloria Lollobrigida, 104 x 69cm (folded) (5)

528 A Primavera student's violin together with two others, and one unfinished example (4)

529 Earth, Wind & Fire, a promotional poster for the "Touch The World" 1988 Tour, Friday Feb. 26 at the Summit, Houston, Texas, 56 x 35.5cm, together with a double sided poster for the release of the EW&F Greatest Hits album / Marvin Gaye Midnight Love, 46 x 30.5cm, an EW&F Columbia Records The Soul Of The 70's card hanging double sided poster, 31 x 56cm and an EW&F On Tour programme. (4)

530 A 1968 Yippies (Youth International Party) Be-In poster, used to promote Human Be-Ins where groups of people in San Francisco and New York gathered to protest against the Vietnam War and the banning of LSD amongst other things, framed and glazed, image 27 x 20.5cm, max. dimensions 42 x 34.5cm, together with an LP for the musical Hair, Polydor 583043, in gate-fold sleeve. (2) The Yippies were an American youth-oriented radical and countercultural revolutionary offshoot of the free speech and anti-war movements of the late 1960s.

531 Hitler, Adolf; Mein Kampf, Franz Eher Nachfolger, central publishing house for the NSDAP, Munich 1939, frontispiece with portrait and facsimile signature protected with paper insert, two volumes in one edition, comprising 781 pages in Fraktur script followed by publishers list, half leather bound with gilt-tooled spine, in plain card slipcase; together with Wolff, Dr, Paul; Was ich bei den Olympischen Spielen 1936 sah (What I saw at the Olympic Games 1936), Karl Specht Verlag, Berlin 1936, appears complete with black and white photographic prints, cloth boards with gilt detailing, lacking dustjacket; and Mandell, Richard D., The Nazi Olympics, Souvenir Press, London 1972, in dustjacket (3)

532 Stanesby, Samuel (illus); The Bridal Souvenir, London, Griffiths & Farran, corner of St

Paul's Churchyard, circa 1867, gilt-tooled leather binding with cloth spine, 8vo (1)

533 Hichen, Robert: The Garden Of Allah, With Twelve Illustrations, Twenty-Ninth Edition, Methuen & Co. Ltd. 36 Essex Street W.C., London, circa 1920, signed by the author, 1/2 green morocco over marbled boards, 8vo. (1)

534 Bede, Cuthbert; The Adventures of Mr Verdant Green, an Oxford Freshman, with 90 illustrations by the author, fifth edition, London, H. Ingram & Co, Millford House, Millford Lane, Strand, 1854; full leather binding with gilt titled spine; together with Little Mr Bouncer and his friend Verdant Green, London, James Blackwood & Co, 8 Lovell's Court, Paternoster Row, circa 1873, full leather with purple morocco title panel 8vo (2)

535 Kieser, John Christopher (ed): The National Melodist with Symphonies and Accompaniments for the Pianoforte, Edinburgh William P Nimmo, circa 1865, with Mauchline Fern ware upper and lower boards decorated with lyre and harp, gilt tooled morocco leather spine, quarto. (1)

536 Mure, J.C.H.: Lessen En Evangelien Op Alle De Dagen Van Het Jaar, (Lessons and Gospels according to the Roman Missal), Leiden, Bij J.W. Van Leeuwen, 1869, full leather binding with two piece white metal clasps, 8vo. (1)

537 Locke, John: A Common-place Book To The Holy Bible: Or, The Scriptures Sufficiency Practically Demonstrated, London, Printed by Edw. Jones, for Awnsham and John Churchill, at the Black Swan in Pater-Noster Row, 1697, title page with small section removed, full leather binding, embossed cover, 4to. (1)

538 Cuyler; The Church's Floral Kalendar, illuminations by W.R. Tymns, Day & Son, 1862, gilt-tooled cloth binding, 8vo (1)

539 Montgomery, Field Marshall Viscount: The Path to Leadership, Collins 1961 first edition, portrait frontispiece, signed to title: "Montgomery of Alamein F.M." original cloth and unclipped dust jacket, signed to title "Montgomery of Alamein F.M.", 8vo, together with Churchill, Sir Winston Spencer: His Wit And Wisdom, Selections from his Works and Speeches with an Introduction by Jack House, Hyperion books, gilt tooled red morocco, pott 8vo. (2)

540 A Steiff bear from the Circus Animals collection, ticket seller with box, white tag in ear, No. 01701

541 Assorted loose cigarette cards in slips to include Gallagher and John Player & Sons together with a mounted set of Tottenham Hotspur footballers

543 Clarendon, Edward Earl of: A New And Authentic History Of England, Books I & II, each lacking title pages, frontis and map, no date or publishers details, leather bindings rebounded calf with gilt titles to spines, with losses, 4to. (2)

- 544 Armstrong, Walter; Gainsborough and his place in English Art, with 62 photogravures and ten lithographic facsimiles in colour, London, William Heinemann, New York, Charles Scribner's & Sons, 1898, later half calf over cloth boards, folio (1)
- 545 Edmondson, Joseph; A complete body of Heraldry, vol I, London, printed for the author by T. Spilsbury, Snow Hill, 1780, later bound in half calf over marbled boards, folio (1)
- 546 Stackhouse, Revd Thomas; A New History of the Holy Bible from the beginning of the World to the establishment of Christianity, second edition, vols I & II, London, printed for Stephen Austin at the Angel and Bible at St Paul's Churchyard, 1742, the second volume dated 1744, full leather bindings with gilt titled spines, folio (2)
- 547 Morant, Philip: The History and Antiquities of the County of Essex, compiled from the best and most ancient Historians, Chelmsford Reprinted And Sold By Meggy And Chalk 1816, 2 vols, with coloured map, 1/2 calf over marbled boards, folio. (2)
- 548 Petrovitch Nyegosh, Petar II; The Mountain Wreath, an historical happening towards the close of the 17th century, rendered into English by James W. Wiles, embossed leather binding with gilt titles, in embossed leather slipcase
- 549 Davidson, John; Carte de Visite album, London, 1880, full blue morocco with gilt titled spine and medallion to front cover, the sparse contents mainly being London views with handwritten annotations, folio (1)
- 550 A collection of Royal Worcester tablewares in the Evesham pattern, to include dinner plates, side plates, tea wares etc
- 551 A box of miscellaneous items to include a Victorian copper warming pan, a pair of brass candlesticks, a brass powder flask, Post Office scales and weights, etc
- 552 Two boxes of miscellaneous items to include an Art Deco style marble mantel clock, a Clarice Cliff Newport Pottery milk jug, a Royal Staffordshire by Clarice Cliff hors d'oeuvres dishes in the Tonquin pattern, etc
- 553 Two boxes of miscellaneous china to include blue & white ginger jar in the Prunus pattern, Imari dishes, continental tea wares etc
- 554 A large collection of radio valves, many being boxed, to include Ferranti, Mazda, Mullard, Bremar etc (2)
- 555 Two boxes of miscellaneous glassware to include a pair of cut glass decanters and stoppers, pair of modern Bristol blue glass goblets, whisky tumblers etc
- 556 A box of miscellaneous china and glass ware to include a Royal Doulton Beefeater character jug D6206, horn handled fish servers, Price Kensington cottage ware teapot, Royal Imperial coffee cans and saucers etc
- 557 A box of miscellaneous items to include a Soho Pottery Solionware 6-place setting coffee service, silver plated fruit basket, trumpet shaped vase etc
- 558 Two boxes of miscellaneous glassware to include cranberry glass beakers, cranberry glass wein hocks, etched glass wein hocks, etc
- 559 A box of miscellaneous Victorian and later glass ware to include pair of overpainted bottle vases, cranberry glass vase, ruby glass table bowl etc
- 560 A box of miscellaneous items to include Tony Carter novelty teapots, Emma Bridgewater Flowers pattern mug, etc
- 561 Two boxes of miscellaneous china to include a Victorian Wedgwood Strawberry dish, having impressed mark verso, Portmeirion pottery dinner wares in the Greek Key pattern design by Susan Williams Ellis, Victorian transfer decorated teapot etc
- 562 An extensive Royal Doulton dinner service in the Larchmont pattern, TC1019; together with an Aynsley tea and coffee service in the Pembroke pattern (four boxes)
- 563 A collection of stamps housed in four albums to include The Viceroy Postage Stamp Album, Third Edition, contents Argentine Republic - Venezuela, The Favourite Philatelic Album dated Xmas 1933, the contents on hand written pages Abyssinia - U.S.A., a Simplex Blank album, contents being GB mint and used low denomination examples and Tower Stamp Album, very sparse contents but some Chinese examples, together with a large collection of World stamps, some loose, many affixed to envelopes and various FDC's. (two boxes)
- 564 A large collection of miscellaneous items to include a pair of brass shell cases, brass oil can, Pontesa ironstone dinnerwares, copper watering can, stoneware jugs (six boxes)
- 565 A box of miscellaneous china, to include Japanese eggshell teawares, Czechoslovakian tea cups and saucers etc
- 566 A box of assorted amethyst overlaid and cut glassware to include wine hocks, vases, bonbon dish and cover etc
- 567 A box of Bohemian style blue overlaid and etched glassware, to include vases, fruit bowl, pinched basket etc
- 568 A box of miscellaneous items, to include a silver plated and cranberry glass inkstand, silver plated tea and coffee pots, loose flatware etc
- 569 A late Copeland Spode part dinner service in the Portland Vase pattern, to include soup

plates, dinner plates, side plates, meat plates, each with printed mark verso (two boxes)

570 A box of miscellaneous items to include a Victorian copper and Sunderland lustre mug, hen-on-nest cruet, 19th century sucrere on stand, blue and white transfer printed meat plates etc

571 A Philips VLP 600 LazerVision player, circa 1982 in silver finish, serial no. AH03219 000067, w.56, d.41, h.15cm.

572 Two boxes of miscellaneous china, to include blue jasperware biscuit barrel and cover, blue and white transfer decorated plates, West German pottery tankard etc

573 A box of miscellaneous items, to include resin Egyptian figures, polished alabaster Sphinx, pair of fire dogs etc

574 A box of miscellaneous china, to include a Chinese export sleeve vase in the Prunus pattern, ginger jars, bowls etc

575 Two boxes of miscellaneous items, to include Japanese satsuma vase, pair of brass candlesticks, brass chamberstick, biscuit barrel and cover etc

576 A box of assorted LPs, to include Elvis - The Christmas Songs, Bill Haley & The Comets - Bill Haley on Stage, Dwayne Eddy - A Tiny Guitar, The Shadows - 20 Golden Greats; together with various 7" singles to include Ferry Aid - Let it Be, Anita Dobson - Anyone can fall in love, Nick Berry - Every Loser Wins, Mel n Kim - Respectable etc

577 Wilson, H.W.; The Great War, thirteen volumes bound in half leather over cloth boards

578 A box of miscellaneous items, to include lady's brown leather handbag, part carriage lamp, various cigarette and collectors cards etc

579 A box of assorted LPs, various dates and genres, to include Frank Sinatra - Nice and Easy, Someone to watch over me, and Greatest Hits, The Drifters - I'll take you where the music's playing, Brenda Lee - Sincerely Brenda Lee, The Shadows - 20 Golden Greats etc

580 Two boxes of miscellaneous glassware, to include wine hocks and brandy balloons etc

581 Two boxes of miscellaneous items, to include oak barleytwist table lamp, silver plated bowl, glass fruit bowl, and various copper warming pans etc

582 A large collection of stamps, housed in albums and ring binders, to include Great Britain 1d reds, 1d lilacs, various other countries to include Austria and New Zealand, USA, Guernsey etc (two boxes)

583 A box of miscellaneous metalware, to include a copper helmet shaped coal scuttle, brass companion set, studded brass bellows etc

584 A collection of children's annuals, mainly being Eagle examples dating from the 1970s; together with a GWR paperback book titled Engines: Names, Titles, Classes etc of the Great Western Railway Locomotives

585 A collection of assorted draughtsman's tools, mainly being leather cases with maker's names, to include the LS Starrett Company of Massachusetts, USA, Brown & Sharp manufacturing company of Providence Rhode Island, USA etc

586 A Royal Doulton part dinner service in the Coppice pattern; together with a Western China dinner and tea service, hand-painted with roses

587 A Wedgwood six-place setting tea service in the Wild Strawberry pattern, R4406

588 Two boxes of miscellaneous items, to include silver plated wine cooler of campagna shape, large copper range kettle, New Hall advertising mugs etc

589 A collection of assorted military uniforms, to include Royal Artillery mess jacket with suede collar and bullion epaulettes, peaked cap, trousers etc

590 A collection of miscellaneous items, to include an early 20th century oak cased portico type clock, a Victorian mahogany and crossbanded box (lacking interior) etc

591 A cut and frosted glass wall light pendant with gilt metal fittings; together with a Chinese style famille noir table lamp with silk shade

592 Two boxes of items, to include horse brasses, tankards, enamelled dish etc

593 A box of assorted children's annuals, to include Rupert and Blue Peter

595 A collection of miscellaneous items, to include novelty tureen in the form of a pumpkin, green glass bottle, wicker baskets etc

596 A collection of assorted records, some in box sets, to include Readers Digest, The Swinging Sixties and the Sensational Seventies

597 A modern six-place setting tea, coffee and dinner service, on a white ground with silver banding

598 A box of miscellaneous items, to include a Royal Albert part tea service in the Old Country Roses pattern, salt-glazed stoneware jug, glass cod bottles etc

599 Dean Martin, an 18 x 14cm colour photograph with facsimile signature, together with Everybody Loves Somebody 7" single, mounted and framed for display, 27 x 41cm, together with six other similar examples to include Bobby Darrin, Marvin Rainwater, The Beverley Sisters, Conway Twitty, Frank Ifield and The Pony Tails. (7)

Approx 3pm

600 A pair of Japanese black lacquered panels with a shibiyama-type decoration depicting geisha girl in landscape, 91x31cm

601 A digeridoo handpainted with a kangaroo, together with a tribal souvenir club and one other tribal carved club (3)

602 A large collection of 7" singles to include Peter, Paul & Mary - Blowing in the Wind, Harry Secombe - At Your Request, Max Bygraves - Sings Christmas Greetings, Dorothy Squires - Look Around, etc

603 A box of assorted 12" vinyl, to include Simon & Garfunkel - Greatest Hits, George Benson - Weekend in LA, Sade - Paradise, etc

604 A collection of stereo components to include a Marantz AV Surround Receiver SR4200, serial No. MZ010149010517 with remote and manual w.44cm, d.32cm, h.15cm, a Mission model 70ASE Powered Subwoofer, a Wharfdale Valdus Centre speaker a pair of Paradigm Micro speakers and one other pair of Paradigm speakers. (7)

605 A collection of assorted seashells, razor clam shells, etc

606 Two boxes of miscellaneous items to include novelty nutcracker in the form of a crocodile, continental porcelain figure of a couple seated on a sofa, Victorian lustre, cottage ornaments etc

607 A collection of miscellaneous items to include a Royal Doulton figure of Falstaff, Edwardian oak and silver plated drinks tray, walnut cased barometer, pair of turned brass candlesticks, Poole charger etc. (two boxes)

608 Two boxes of assorted camera equipment to include Pentax A28mm lens, Centon 500mm compact mirror lens, Fujifilm Finepix S1900 camera, Opteka Super Telefoto Zoom lens, camera tripod etc

609 A box of miscellaneous items to include an early 20th century Smiths clock/barometer, dome top jewellery box, Portmeirion rolling pin, etc

610 A box of miscellaneous items to include Regency style triple ring neck decanter, copper chocolate pot, continental figures

611 A box of miscellaneous china to include Burslem blue & white transfer decorated table wares, Delft tankard, Delft vase etc

612 A large collection of miscellaneous items to include loose silver plated flat wares, copper jug etc

613 A collection of mobile phones and accessories, to include Nokia etc

614 A box of miscellaneous items to include modern issue Models of Yesteryear diecast toy vehicles, travel chess game etc

615 A box of assorted LPs mainly being classical examples to include Tommy Steele in Half a Sixpence, Mozart The Four Horn Concertos, Beethoven Symphony No. 7 in A Major, Oklahoma etc

616 A collection of Royal Doulton dinner and tea wares in the Camelot pattern TC1016

617 A box of miscellaneous items to include a ceramic model of a retriever in seated pose, a Staffordshire pastille burner, Staffordshire spaniels etc

618 A brass lantern clock in the 17th century style, various wall and mantel clocks etc (one box)

619 Two boxes of assorted optical equipment to include Sunagor mini pocket binoculars, brass opera glasses, Fujifilm JV300 camera

620 Five boxes of miscellaneous items to include Staffordshire figures, silver plated entree dishes, grocer's scales, etc

621 Six boxes of miscellaneous items to include Victorian ceramic jelly moulds, copper fish mould, glass vases, soda siphon, Japanese tea wares etc

622 A large collection of miscellaneous items to include salt glazed stone ware bread crock, stoneware foot warmer, Torquay moto wares etc

623 Two boxes of miscellaneous items to include Le Creuset orange enamelled casserole dish & cover, similar frying pan, cut glass wine hocks, etc

624 Three boxes of miscellaneous items to include 1930s oak ceiling light shade, Victorian water jugs, silver plated serving tray, copper powder flask etc

625 A small collection of miscellaneous items to include Royal Worcester blush ivory bottle vase with shot enamel floral decoration shape No. 850 puce mark verso (with old break and repair), butter dish and cover

626 A large collection of miscellaneous items to include Victorian walnut brass bound writing slope, walnut cutlery canteen (lacking contents), oak twin handled serving tray, etc

628 A collection of textiles and ostrich feather boas etc

629 A box of assorted LPs, to include John Denver - Back Home Again, Rod Stewart - Maggie May, Elton John - self-titled etc

630 A pair of brass wall light fittings; together with various other light fittings, wrought iron curtain rail, and a brass oil lamp

631 Four 1930s opalescent glass ceiling light pendants

632 An early 20th century postcard album, with contents to include military examples; together with various real photographs etc

633 A collection of miscellaneous items, to include a leather fire bucket, pewter teapot, continental beerstein, Guinness advertising ashtray etc

634 A large Chinese Canton export charger, enamel decorated in the famille vert palette, the centre decorated with figures within landscape, 45cm

635 A Chinese export table lamp, enamel decorated with butterflies amidst flowers and foliage; together with one other table lamp (2)

636 A large stoneware vase, of shouldered baluster form to a tapered body, with underglaze red decoration, h.42cm

637 A Chinese export bowl, enamel decorated with flowers within a border of flowers and goldfish, dia. 36cm

638 A Chinese export blue and white charger, underglaze decorated with birds amidst flowers and foliage, having further flowering bamboo decoration to the underside, dia.37.5cm

639 A Chinese Canton export bowl, in the famille vert palette; together with a similar vase

640 A small collection of miscellaneous items to include blue and white transfer decorated soap dish, pair of delft vases etc

641 Two boxes of miscellaneous items, to include a Staffordshire flatback figure of Darby & Joan, set of six Babycham glasses, Maling lustre bowl etc

642 Two boxes of miscellaneous items, to include a copper inkwell, Canton teawares, blue and white jar and cover etc

643 An early 20th century copper coal bucket, having studded bands and swing handle; together with various brass and copper pots (5)

644 A 20th century briarwood walking stick with horn handle; together with one other walking cane and a tribal example (3)

645 Kinky Friedman, a stars and stripes lithograph print, inscribed "For Peter + Kiran and the Caliente Cafe (Best Tex-Mex this side of the Rio Grande. Possibly even the other!) your friend, The Kinkster 6.24.92", framed and glazed, 59 x 61cm.

646 A replica England shirt bearing signature of Ipswich Town legend Terry Butcher, with two colour photographs and mounted for display; together with an Ipswich Town football club pendant with various signatures (2)

647 A Nikon CT-603 for Nikkor Ed 600mm 1:5.6 lens, in fitted case

1001 T.E. Oben - Station platform scene with steam trains, oil on canvas, signed and dated '96 lower right, 45 x 60cm

1002 Isle of Man (Mona), hand-coloured engraved map, 38 x 27.5cm

1004 Late 19th century English school - Half-length portrait of Frances Catherine Tottie (nee Garforth), oil on canvas, 68 x 50cm

1005 Archibald Thorburn (1860-1935) - monochrome print, unframed, 40 x 55cm

1006 A.H. Green - Interior scene with grandmother, mother and daughter, oil on canvas, signed to canvas verso, 49 x 64cm

1007 Frances Raynor Coppinger (1834-1889) - Church interior, watercolour, signed and dated 1881 lower right, 47 x 65cm

1008 Kid Rodelo, Argentine one sheet film poster, starring Don Murray and Janet Leigh, 74 x 109cm, framed.

1009 A Gilbert & George gallery poster print for their exhibition at the White Cube, Bermondsey, November 2017-January 2018, 60 x 90cm, framed

1011 Contemporary school - Pair; The cocktail bar, acrylic on canvas, each 60 x 45cm

1012 A modern gilt framed and bevelled rectangular wall mirror, 113 x 88cm

1013 Alan Fearnley (b.1942) - Old friends, limited edition print numbered 101/500, signed in pencil to the margin, 37 x 55cm; together with one other by the same hand - The model-maker, signed and numbered 101/500 to the margin (2)

1014 Ken Michaelsen (b.1936) - Autumn wings, lithograph, signed in pencil to the margin, 46 x 68cm

1015 A Jaguar 240 maintenance chart, mounted under perspex, 52 x 69.5, together with a Jaguar 240 operating maintenance and service handbook (2)

1016 Anthony Brandt (1925-2009) - Ecstasy, limited edition lithograph numbered 771, 56 x 105cm; together with an original chalk study after Brandt (2)

1017 William Russell Flint (1880-1969) - Festal preparations, Fine Art Trade Guild limited edition print, with blindstamp and signed in pencil to the margin, 42 x 57cm; together with two other William Russell Flint lithographs (3)

1018 Harold Percival (1868-1914) - The three-masted ship Eastcroft in calm seas, watercolour heightened with white, signed and dated 1897 lower left, 42 x 62cm

1019 Alexendro Pena - Untitled mixed media on canvas, 89 x 117cm; together with one other (2)

**HENRY ROOM – 10AM**



- 1022 Trevor P\* - Underwater, artists proof lithograph, 51 x 51cm, signed and titled in pencil to the margin and housed in a glazed box frame
- 1023 A monochrome engraving of Charles I after parting with his children, 52 x 40cm; together with one other titled Rubens taking leave of van Dyke (2)
- 1024 Albert Dunnington (1860-1928) - Loch Fadh near Rothesay, Arran in the distance, oil on canvas, signed and dated 1899 lower right, further signed, titled and dated 1899 verso, 75 x 101cm
- 1025 Baragwanath King (1864-1939) - Pair; landscape studies, watercolour and gouache, each signed lower left, 27 x 44cm
- 1026 Mervyn Goode (b.1948) - The wooden footbridge, oil on canvas, signed lower right, 25 x 35cm
- 1027 Peter Gilman (1928-1984) - Moored barge at Greenwich pier, oil on mill board, signed lower right, 22 x 29.5cm; and Jay Ward - Dreams of Delft, acrylic (2)
- 1028 James Walter Gozzard (1888-1926) - Pair; boating scenes, heightened watercolours, each signed lower left and lower right, 13 x 23cm
- 1029 A. T. Burbery - The Boatyard, acrylic on canvas, signed lower left, 40 x 60cm
- 1030 Joseph Hecht (1891-1951) - etching, signed and titled in pencil to the margin, 26 x 36cm
- 1031 T.E. Oben - Steam train pulling away from the platform, gouache, signed and dated '95 lower right, 37 x 54cm; together with five other similar works by the artist (6)
- 1032 T.E. Oben - The steam train WP Allen at full speed, gouache, signed and dated '96 lower right, 36.5 x 54.5cm; together with three other similar works by the artist; and T.E. Wigston - The Sir Michael Gresley leaving the station, watercolour, signed and dated 2007 lower right, 35 x 53cm (5)
- 1033 Geoff Bartlett (b.1952) - Autumn, watercolour, signed lower left, 25 x 38cm; Gordon Rushmer (b.1946) - Storm - Great Shunner Fell, watercolour; Colin Kent - watercolour; and D Godsill watercolour (4)
- 1034 B. Ochirhuyag - African beach scene, acrylic on canvas, signed and dated '97 lower right, 39 x 59cm
- 1035 Guy Magnus - Mevagissey, Cornwall, ink study, 19 x 29cm; R Holden - watercolour; and Andrew King - watercolour (3)
- 1036 Andrew Empton - Peru '91, monochrome photograph, signed in pencil to the mount and numbered 3/50, 38 x 25cm; together with one other by the artist (2)
- 1037 Contemporary school - artist proof print, 43 x 57cm; together with two others (3)
- 1038 M. Sampson - Continental landscape, watercolour, signed lower left, 25 x 32cm; together with two other original watercolours (3)
- 1039 G. Norden - Avant le depart, oil on mill board, 35 x 30cm
- 1041 Contemporary school - abstract landscape study, gouache, 30 x 30cm; together with four other similar examples, each in contemporary blond oak frames
- 1042 A printed tin advertising sign for Shell Oil; together with one other similar, each 50 x 70cm
- 1043 After J Andrews - botanical print as published by Vincent Brooks; together with three reproduction colour engravings of exotic and rare birds (4)
- 1044 A pair of contemporary watercolour sketches; together with another of Kent oast houses, signed with monogram and dated 1922 (3)
- 1045 A printed tin advertising sign for Shell; together with another similar, each 50 x 70cm (2)
- 1046 A Biblical print and a contemporary oil on mill board (2)
- 1047 A Japanese framed silkwork panel, with border; together with a similar companion, each in gilded faux bamboo frames, gross dimensions 71 x 38cm
- 1048 George Brookes Percy Spooner Lillingston (1850-1932) - Returning home, oleograph 40 x 67cm
- 1049 Early 20th century English school - Landscape study, watercolour, 52 x 40cm; and Alan Ingham - Easter Miracle, limited edition print, signed and numbered 143/600 in pencil to the margin (2)
- 1050 Circa 1900 English school - Bust portrait of Miss Sandys, oil on card, 25 x 20cm; together with a English school pastel portrait of a young girl (2)
- 1051 William Russell Flint (1880-1969) - limited edition print No. 77/750, 28 x 53cm; together with one other by the artist (2)
- 1052 J. Rimmer - The flying swan, pastel, 24 x 35cm; one other by the artist being a street scene, signed and dated 1964 lower right; together with a Benjamin Perkins print (3)
- 1053 Juan Carlos Ferringo (b.1960) - Fangio and Alfa Romeo, limited edition print No.411/500, unframed; together with two other unframed sporting prints and sundry ephemera
- 1054 C. Adams - Crown Street, Bury St Edmunds, watercolour; together with three other local topographical watercolours by the same hand (4)
- 1055 T. Fairhurst - Winter Moon above Wramplingham Church, oil on panel, signed lower

right, 28 x 38cm, with gallery label verso for the Fairhurst Gallery, Norfolk

1056 Topographical engravings to include a sheet from Durham Illustrated showing various local views, one other of Durham cathedral, another of Durham interest, and a coastal watercolour (4)

1057 Bob Hope - framed presentation montage comprising photograph and signed first day cover

1058 Assorted engraved and hand-coloured county maps, to include Staffordshire, Devonshire and Huntingdonshire (7)

1059 Four framed bond certificates, as published in Vienna for the Eastern European market

1060 A collection of framed Vanity Fair Spy prints as published by Vincent Brooks, Day & Son (4); together with three topographical engravings to include a View of Durham Castle, being the Bishop's Palace (7)

1061 A 19th century silkwork panel, probably Japanese, depicting exotic birds on branches, in English glazed frame, 31 x 46cm

1062 After Peter Partington (b.1941), a collection of six ornithological hand coloured etchings, each signed, titled and numbered to the margin, framed as pairs, 39 x 43cm, 44 x 52cm and 52 x 44cm. (6)

1063 Trevor Leighton, (b.1957), a pair of black and white photographic portrait prints of British actor, comedian, singer, television presenter and writer Lenny Henry, each signed lower right and dated 1984, together with five other examples to include Norman Parkinson, signed "To Kazim Best Wishes", Ian McKellen and John Hurt, Dawn French and Jennifer Saunders, Nicholas Parsons and Martin Sheen, each signed and uniformly framed 42 x 32cm. (7)

1064 G. Chambers - Female nude figure study, oil on mill board, signed and dated 1956 lower right, 28 x 39cm

1065 Circa 1900 English school - Pair; Sailing boats off the coastline, watercolours, each signed with monogram JS, 16 x 29cm; and D.I. Stuart (1879-1970) - One the Thames, watercolour (3)

1067 A collection of thirteen theatre studies for the production of Don Juan, each in pen, ink and watercolour with notes on woven paper, 40 x 29.5cm. (rolled)

1068 A collection of framed music scores mainly from the 1960's, to include You'll Never Walk Alone, Take These Chains From My Heart, Goodnight Sweetheart, Someone Someone, Gold Diggers of 1935, Secret Love, Try a Little Tenderness, Red Sails in the Sunset and The Dam Buster, mostly 32 x 27cm. (9)

1069 Christopher Mark Maskell (1849-1933) - Thatched cottage in a landscape with sheep

grazing beyond, oil on panel, signed lower left, 19 x 27.5cm

1071 An enamel advertising sign for Clark Brothers Ales & Stouts of the Risbygate Brewery in Bury St Edmunds, 45 x 61cm (a/f)

1072 A contemporary moulded composition portrait mask of an Eastern deity, 113 x 85cm

1073 Contemporary school - Untitled, watercolour, 50 x 65cm; together with one other (2)

1074 A 19th century elm blanket box, w.74cm

1075 A coloured glass carboy converted into a lamp

1076 Assorted pictures and prints to include landscape oil

1077 Assorted pictures and prints to include portrait and topographical engravings

1078 Assorted pictures and prints to include Grand Tour coastal watercolour

1079 An acoustic guitar, with vinyl carry case

1080 Assorted railway prints, to include Malcolm Root (b.1950) - On trial, signed and numbered in pencil to the margin

1081 Assorted pictures and prints to include monochrome engravings, framed display of Will's cigarette cards, bevelled oval wall mirror, J.S. Webster - Quayside scene watercolour etc

1082 A box of assorted pictures, prints, frames etc

1083 Two boxes of assorted pictures and prints to include various amateur watercolours including landscapes, still life etc

1084 A reproduction gilt framed and bevelled rectangular wall mirror, 102 x 71cm; together with a gilt composition framed oval wall mirror; and two others (4)

1086 Early 20th century advertising sign on milk glass for Bass No.1, 35 x 50cm, in oak frame; together with a Johnnie Walker printed on card advertising sign (2)

1087 A made-up boarded oak box/trunk, w.69cm

1088 A Victorian stained pine blanket box, w.93cm

1089 A box of assorted pictures and prints, to include landscape scene pastel, portrait studies etc

1090 Two reproduction wartime propaganda posters, each being framed

1091 A Ford-Ercolano Six, mixed media decoupage, signed and numbered 3/50 in pencil to the margin, 76 x 53cm; together with one other titled Ercolano Three; and four other smaller examples by the same hand (6)

1092 Contemporary school - Arcadia IV, lithograph, 71 x 85cm; together with two other contemporary screenprint - Causeway XVIII and Accolade X (3)

1093 Mark Barnard - Something momentarily recognised, from the artist's Hide & Seek series, 1994, acrylic on canvas, 122 x 153cm

1094 G. Trevor - Pair; Lowtide and On the Devon Coast, watercolours, each heightened with white, signed lower right, 17 x 26.5cm

1095 Early 19th century English school - Cattle in a North Country landscape, oil on oak panel, 12.5 x 9.5cm

1096 Philip H. Rideout (1860-1920) - Pair of stagecoach scenes, watercolours, 12 x 27cm

1097 Edward Stamp (b.1939) - Near North Marston, Buckinghamshire, oil on canvas, signed and dated 1981 lower right, 19 x 24cm; together with a pair of watercolours by the same hand, each being Buckinghamshire rural landscapes (3)

1098 Ray Evans (1920-2008) - Palais Royale, Paris, watercolour, signed and dated '79 lower left, 8 x 18cm; together with two others by the artist (3)

1099 Indian Mughal school - a manuscript page, gouache heightened with gilt, 18 x 12cm

1100 Chinese school - a set of four Royal portraits, watercolours on rice paper, each 20.5 x 17cm

1102 A convex enamel advertising sign, dia.30cm

1103 A convex enamel advertising sign, dia.30cm

1104 A convex enamel advertising sign, dia.30cm

1105 An enamel advertising sign 'Pure Drugs', 29 x 37cm

1106 St Paul's from the Thames, etching; together with a William Russell Flint print (2)

1107 Judy Kemp (b.1939) - Cavendish, acrylic on canvas; together with an amateur pastel print etc (4)

1108 Mark Barnard - Before the horizon, acrylic on paper; together with other contemporary artworks and lithographs (5)

1109 A printed tin advertising sign for WD40, 70 x 50cm

1110 A printed tin sign 'Man cave', 70 x 50cm

1111 A printed tin advertising sign 'FAB Lollies', 70 x 50cm

1112 A printed tin advertising sign 'The Cock Inn', 70 x 50cm

1113 A printed tin advertising sign for Jack Daniels, 70 x 50cm

1114 A printed tin advertising sign for Guinness, 70 x 50cm

1115 A contemporary tubular anodised metal hat stand, height 181cm

1116 A Japanese low four-fold painted screen, each panel width 43cm

1117 An Arts & Crafts walnut four-tier whatnot, of square form, with turned finials, interlaced wavy detail, the central three tiers with adjustable shelves, h.162cm, w.40.5cm, d.40.5cm

1118 An early Victorian mahogany three division Canterbury, having single lower drawer, with turned supports to reeded bun feet, width 67.5cm

1119 A giltwood and gesso oval wall mirror, having a floral decorated surmount, 73.5 x 53cm

### **Approx 11am**

1120 A contemporary painted metal arched wall mirror, in the form of a window, 131 x 75cm

1121 A contemporary mahogany kingsize full tester bed, having a slightly curved canopy, raised on reeded and floral decorated and further turned columns, with side rails and supporting central section

1122 A mahogany freestanding corner cupboard, having astragal glazed upper door over panelled lower cupboard door, height 190cm

1123 A Victorian mahogany round cornered bookcase cupboard, having twin arched glazed upper doors, width 106cm

1124 A contemporary painted metal lancet arched wall mirror, in the form of a window, 158 x 67cm

1125 A Chinese Chippendale style carved giltwood framed oval wall mirror, having a floral and pagoda decorated border, 104 x 59cm

1126 An Ansonia mahogany circular wall clock. dia. 40cm

1127 An Art Deco oak drop trunk wall clock, by Billard-Volteau, with pendulum and winding key, height 63.5cm

1128 A contemporary painted metal arched wall mirror, in the form of a window, 77 x 49cm

1129 A mid-20th century RMC painted metal electric circular wall clock, dia. 55cm

1130 A circa 1900 giltwood and gesso floral decorated square wall mirror (with replacement mirrorplate), 86 x 86cm

1137 A white painted cast and pierced metal ended slatted teak two-seater garden bench, width 128cm

1138 A contemporary plank top hardwood circular pedestal breakfast table, dia. 152cm

1139 A painted pierced wrought iron ended and stained pine slatted three-seater garden bench, w.159cm

1140 A Persian woollen red ground Shiraz rug, having a heavy floral decorated ground within trailing tramline borders, 368 x 253cm

1141 A Persian woollen rust ground Tabriz rug, 186 x 110cm, together with a further woollen Kilim rug, 130 x 95cm (2)

1142 An early 20th century Arts & Crafts Cotswold School style oak double door side cupboard, having twin panelled doors, each with cut-out star central motifs within stylised applied brass mounts, vented side profiles, the interior with single shelf, raised on square cut stand united by side and central conforming stretcher, height 155cm, width 151cm, depth 46.5cm

1143 A joined oak long settle, having pronounced slat and circle back, over hinged box seat base, width 177cm

1144 A Victorian oak window seat, having rolled ends and raised on turned supports (some losses and damages), length 130cm

1145 A George III joined oak dresser, having an associated three-tier plate rack over with dentil moulded ogee cornice and pierced frieze, the base having a three-plank top above three frieze drawers, w.208cm, d.47cm, h.212cm

1146 An Arts & Crafts oak bookcase cupboard, having dentil moulded cornice over twin glazed upper doors, the base fitted with single frieze drawer to conforming panelled lower cupboard doors, on square stepped block supports, h.206cm, w.100cm, d.43cm

1147 A Victorian cast iron, later white painted, and brass double bedstead with iron side rails

1148 A large contemporary decorative grey painted square wall mirror, with ribbon surmount and leaded plate glass inset, max dimensions 210 x 140cm

1149 A circa 1800 provincial oak long case clock, the silvered dial signed Thomas Steight, twin winding holes for an 8-day movement, with date aperture, brass spandrels, with two weights and pendulum, height 202cm

1150 A contemporary double door wardrobe, width 117cm

1151 A collection of contemporary beech freestanding artists easels

1152 A collection of four various early 20th century painted metal travelling trunks

1153 A contemporary cherry-wood double full tester bed, having reeded tapering columns, with base section, of allen key construction (currently dismantled)

1154 A contemporary white wood double door wardrobe, width 94cm

1155 A contemporary pine double door wardrobe, having two short over single long lower drawer, width 103cm

1156 A circa 1800 provincial oak long case clock, the silvered dial signed John Livejoy, twin winding holes for an eight day movement, date aperture, with pendulum and two weights, height 191.5cm

1157 A modern pine single bedstead, with side rails and twin slatted base section

1158 A pair of pine freestanding barrel back corner cupboards, each having arched open upper section, with integral shaped shelves over single recessed panelled lower cupboard doors, with further acanthus leaf and fluted detail, height 203cm

1159 A Helios Sky Scan 2001 Reflector Telescope, raised on adjustable tripod stand

1160 A set of traffic lights mounted to a later adjustable tripod stand

1161 A circa 1900 Chippendale Revival floral carved mahogany breakfront side cabinet, of all over shaped form with recessed mirror plates, open shelves, central upper glazed door with velvet lined interior, lower glazed cabinet doors, on slender French cabriole supports, width 137cm

1162 A pair of contemporary pine painted single door bedside cupboards, each with single upper drawers, width 38cm

1163 A contemporary Laura Ashley white painted chest of two short over two long drawers, having canted corners and on squat cabriole supports, width 122cm

1164 A painted metal champagne bucket of oval tapering form, width 60cm

1165 Victorian occasional furniture, to include; commode stool, fixed top tripod low occasional table, walnut and inlaid octagonal hinge top sewing table, and an X-frame upholstery topped stool (4)

1166 A circa 1900 mahogany bow front sideboard, the central drawer flanked by conforming side drawers on square tapering supports, width 137cm

1167 A pair of small 19th century mahogany rectangular foot stools, each with tapestry upholstered inset tops, width 30cm

1168 A George III mahogany three-drawer low boy, with shaped apron and raised on square slightly tapering supports, width 76cm

1169 An early 19th century mahogany single drawer side table, on square tapering supports, width 91.5cm

1170 A contemporary steel graduated ornamental centrepiece, height 46cm

1171 A contemporary cherry wood demi-lune single drawer two-tier side table, width 83cm

1172 A 1930s mahogany circular three-tier folding cake stand, together with an early 20th century mahogany oval swing dressing mirror (2)

1173 A 1930s oak kneehole writing desk, one pedestal with an arrangement of seven drawers, the other with cupboard door and single upper drawer, width 137cm

1174 A modern pine freestanding corner cupboard

1175 A contemporary American hardwood ledgeback Serpentine front two-drawer bedside table, width 59cm

1176 A 1970s teak folding two-tier tea trolley, with revolving action, width 71cm

1177 An early 20th century oak drop leaf gateleg table, with barley twist turned supports, together with a Victorian mahogany hall table, raised on turned supports to X-frame stretcher (2)

1178 A 1970s teak student's bureau, width 91.5cm

1179 An early 19th century mahogany drop leaf dining table

1180 A small 1930s figured walnut double door bedside cupboard, having twin upper drawers on shell capped cabriole supports, width 51cm

1181 An electric guitar with amplifier, and various magazines

1182 A late Victorian pierced brass round cornered fender, width 93cm

1183 A mahogany twin pedestal writing desk, having a gilt tooled red hide inset surface, over an arrangement of nine drawers, width 137cm

1184 An unusual Regency rosewood and satinwood crossbanded writing table, having a hinged and crossbanded top, single end frieze drawer to an hexagonal column, on hipped cabriole supports with brass caps and castors, w.66cm, h.73cm (top down), d.46cm

1185 A steel freestanding gun cabinet with keys, height 127cm

1186 A 1930s mahogany grandmother clock, having striking and chiming movement, glazed panel trunk inset, height 139.5cm

1187 A contemporary chromed metal hanging ceiling light, of elongated rectangular form, length 82cm

1188 A walnut rectangular coffee table, having a gadrooned edge and raised on shell capped cabriole supports, length 103cm

1189 A mahogany hinge top glazed display table, raised on square moulded tapering supports, width 117.5cm

1190 A modern pine round cornered three-drawer bedside chest, width 55cm

1191 A contemporary Chinese pierced, ebonised, and porcelain inset table screen, 67 x 44.5cm

1192 A mahogany slopefront bureau on stand, the interior converted into a drinks cabinet, with mirrored surface, over two long drawers to cabriole supports, w.75cm

1193 A Regency mahogany dressing mirror, the rectangular plate within ring turned supports to conforming three drawer boxbase, w.56cm

1194 A modern pine round cornered mirrorback dressing chest, w.95cm

1195 An early 20th century oak breakfront bookcase cupboard, having four astragal glazed upper doors enclosing adjustable shelves, over four geometric recessed panelled lower cupboard doors, w.153cm

1196 A circa 1900 and later white painted overmantel mirror, in the classical taste, w.105cm

1197 A printed tin advertising sign for Cherry Blossom Boot Polish, 74.5 x 48.5cm

1198 An antique joined oak low single door side cupboard, having sloping hinged upper compartment, w.69cm

1199 An early 20th century satinwood and rosewood inlaid nest of three occasional tables, the largest w.49.5cm

1200 An early 20th century Dutch two drawer lowboy, having all-over serpentine shaped outline and on slender cabriole supports, w.72cm

1201 A contemporary Laura Ashley pine and painted round cornered narrow chest, of six graduated drawers, w.59cm

1202 A Regency mahogany swing dressing mirror, raised on three drawer boxbase (lacking handles), w.53.5cm; together with a floral carved walnut triptych dressing mirror (2)

1203 A stained oak low open bookshelf, raised on associated stand, w.134.5cm

1204 A figured walnut cross and feather banded slopefront writing bureau, in the Queen Anne taste, having a fitted interior, over two short and single long drawer, raised on pronounced S-scroll supports united by shaped lower stretchers and bun feet, w.81cm

1205 A collection of three 20th century joined oak joint stools, the largest h.50.5cm

1206 A 19th century walnut and mustard floral upholstery topped dressing stool, raised on ring turned and square cut supports, w.71cm

1207 A suite of gilt and cream painted American bedroom furniture, to include a three drawer dressing table, w.117cm, a single drawer side table, w.92cm, and a bedside cupboard, w.40.5cm (3)

1208 A joined oak double door wardrobe, having interior hanging rail, twin lower dummy drawers and two further long drawers, w.109cm

1209 A reproduction mahogany and crossbanded serpentine front chest of two short over three long drawers, w.68.5cm; together with a reproduction mahogany and crossbanded dropflap two drawer sofa table (2)

1210 A 19th century mahogany slopefront writing bureau, having an arrangement of four long graduated drawers, w.95cm

1211 A mid-Victorian figured walnut and floral satinwood inlaid slopefront Davenport, having four side drawers (areas of previous woodworm, surface losses and damage etc), w.53.5cm

1212 A joined oak linenfold three panelled hinge topped blanket box, w.86cm

1213 A reproduction mahogany serpentine front sideboard, in the Regency taste, w.152cm

1214 A contemporary grey painted pine kitchen dresser, the three-tier plate rack with five short drawers, over base with four long drawers and conforming lower cupboard doors, w.182cm

1215 Two contemporary pine freestanding open bookshelves

1216 A mahogany bowfront chest of two short over three long drawers, w.78cm

1217 A 19th century mahogany square front chest of two short over three long graduated drawers, width 109cm

1218 A hardwood and brass studded Zanzibar chest, having iron end carry handles, removable tray and partially fitted interior, w.57cm

1219 A contemporary pine squarefront chest of two short over four long drawers, w.90cm

1220 A pair of early 20th century child's wheelback elm seat kitchen chairs, w.39cm

1221 A circa 1900 mahogany bowfront three drawer dressing table, raised on square slightly tapering supports, w.101cm

1222 An elm squarefront low chest of three long drawers, w.97.5cm

1223 A collection of four various similar joined oak milking stools, three with chip-carved surface detail

1224 A circa 1900 floral line carved oak low freestanding open bookshelf, w.122cm

1225 A modern pine hinge topped blanket chest, w.82.5cm; together with a modern pine four panel

hinge topped mule chest, with single long lower drawer, w.110cm (2)

1226 A floral carved and ebonised oak single door hanging corner cupboard

1227 A mid-Victorian mahogany round cornered chest of two short over three long drawers, w.103cm

1228 A joined oak linenfold panelled double door wardrobe, w.101cm

1229 An Edwardian oak single mirror door wardrobe, having single long lower drawer, w.101cm

1230 A 19th century Spanish walnut single drawer side table, raised on shaped lyre end supports (some losses and damage), w.102cm

1231 An early 19th century mahogany squarefront chest of two short over three long drawers, w.108cm

1232 An unusual antique figured walnut four drawer caddy chest of stand, in the early Georgian taste, w.57cm

1233 A Victorian mahogany low freestanding open bookshelf, w.91cm

1234 An early 20th century black painted wrought iron stickstand; together with a wrought iron floor light (2)

1235 A French style gilt metal and moulded glass tent and bag electrolier, approx drop 90cm

1236 A French marbled glass and brass framed hanging ceiling light, of domed form, dia.46cm

1237 A contemporary freestanding globe bar, with hinged cover

1238 A contemporary oak dining suite, comprising; plank topped long refectory table, raised on twin bulbous end supports united by low H stretcher, length 244cm, and a set of eight conforming joined oak tan leather studded pad back and seat dining chairs, all in the 17th century taste (6+2) (9)

1239 An Edwardian mahogany and satinwood inlaid shield shaped bevelled swing dressing mirror, raised on single drawer boxbase, w.56cm

### **Approx 12noon**

1240 An early 20th century bamboo framed and floral reverse glass painted inset fire screen, w.58.5cm

1241 A 19th century mahogany long two-tier servery, raised on square tapering supports to spade terminals, w.152cm

1242 A contemporary burgundy leather and brass studded buttonback single Chesterfield armchair, w.109cm

1243 A 19th century mahogany twin pedestal partner's desk, the top having gilt tooled leather inset writing surface, above three frieze drawers to either side, the pedestals each fitted with three graduated drawers to either side, d.129cm, w.153cm, h.75cm

1244 An acoustic guitar

1245 An early 19th century mahogany D-end side table, raised on ring turned supports, w.122.5cm

1246 A double sided enamel on metal wall mounted advertising sign, of circular form, titled Flying A Gasoline, dia.61cm

1248 George Ciancimino (b.1928) - a circa 1970 brushed aluminium and smoky glass inset square coffee table, etched monogram to underside of frame, h.42cm, w.86.5cm, d.86.5cm

1249 A contemporary pine round cornered farmhouse kitchen table, length 151.5cm; together with a pair of beech kitchen elbow chairs; and a set of four beech splatback kitchen chairs (7)

1250 A contemporary joined oak dining suite, comprising; refectory table with cleated ends, opposing extending end attachments and single frieze drawer, max length 283cm, and a set of six conforming ladderback rush seat dining chairs (4+2) (7)

1251 A contemporary cherry wood oval coffee table, length 110cm

1252 A contemporary Eastern hardwood and metal bound large rectangular low coffee table, length 135cm

1253 A 1970s teak and smoky glass inset two-tier rectangular coffee table, length 116cm

1254 An early 20th century mahogany dining suite, comprising; D-end extending dining table, having a gadrooned edge, two extra drop-in leaves and raised on shell capped cabriole supports, and a set of six conforming shell capped splatback dining chairs with tan leather drop-in pad seats (7)

1255 A set of golf clubs with bag

1256 A contemporary light oak topped and painted two-tier three drawer hall table, w.106cm

1257 A contemporary light oak topped and painted dining table, having pull-out action and single extra drop-in leaf, max length 165cm; together with a set of four white painted slatback dining chairs (5)

1258 A mid-Victorian mahogany oval tilt-top pedestal breakfast table, length 136cm

1259 A walnut refectory table in the 17th century taste, raised on plain turned supports united by low H stretcher, length 184cm

1260 A pair of 19th century carved oak cane back and seat dining chairs, raised on barleytwist turned supports, w.46cm

1261 A contemporary bamboo effect conservatory breakfast suite, comprising; a glass inset circular table, dia.109cm, and a set of four conforming cane inset chairs (5)

1262 An early 20th century mahogany breakfront bookcase, having three astragal glazed doors with interior shelves, w.153.5cm

1263 A pair of French white wood floral upholstered pad back and stuffover seat salon side chairs, in the Louis XVI taste; together with a Victorian ebonised and upholstered tub nursing chair (3)

1264 A mid-Victorian mahogany framed and lime green buttoned fabric upholstered open deep easy armchair, raised on ring turned tapering forelegs to castors, w.74cm

1265 A 19th century mahogany barback scroll elbow chair; together with a 19th century mahogany Chippendale style elbow chair; and an early 20th century beech and panelled back and seat rocking side chair (3)

1266 A pair of early 20th century mahogany framed and cane backed open armchairs, each having mustard floral upholstered deep padded seats, w.61cm

1267 Wesley-Barrell - a pale fabric Hinton three-seater sofa, with twin squab cushions and four scatter cushions, raised on turned forelegs to brass pot castors, w.200cm

1268 A late 19th century Continental heavily carved and ebonised oak three-piece parlour suite, comprising; three-seater sofa and a pair of armchairs, each with medieval design woven tapestry upholstered pad backs and stuffover seats, further confirming raised arm rests, mask decorated arm terminals, and further all-over floral scroll detail, sofa w.155cm, armchair w.69cm

1269 A mid-Victorian floral carved walnut single balloon back salon side chair, with upholstered stuffover seat; together with a similar rosewood example (2)

1270 A late Victorian beech framed and floral fabric upholstered scroll end chaise-longue, raised on squat turned supports to castors, length 178cm

1271 A set of six 1970s beech stickback and ply seat kitchen chairs, w.41.5cm

1272 A pair of Regency mahogany barback elbow chairs, each with green leather upholstered drop-in pad seats, w.52cm

1273 A contemporary white painted metal two-seater garden bench, having strapwork seat with removable cushion, w.130cm

1274 An 18th century joined oak recessed panelled back and seat Wainscot chair, the square supports united by lower stretchers, w.59cm

1275 Torbjørn Afdal (1917-1999) - a 1960s afrormosia teak framed 'Hunter' armchair, having tan leather buttoned detachable cushioned seat, canvas slung support, with further stitched slung arms, of allen key construction, w.63.5cm

1276 An Empire style mahogany framed armchair, having a dralon re-upholstered pad back and arms, stuffover seat, the back with gilt metal mounts, the arms raised on parcel gilt winged maidens, seat d.51cm, seat w.49.5cm

1277 A set of eight Regency mahogany dining chairs, having elegant barbacks, drop-in seats and raised on acanthus leaf topped reeded sabre legs

1278 An early 20th century elm tub Captain's chair, w.64cm

1279 A set of five early 20th century elm seat and beech stickback kitchen chairs

1280 A set of three early 20th century mahogany Chippendale style elbow chairs, with tan leather drop-in pad seats; together with a single Chippendale style dining chair (4)

1281 A circa 1900 blue floral fabric upholstered tub chair, raised on slender cabriole forelegs, w.73cm

1282 An 18th century joined oak plank topped single drawer side table, raised on turned and square cut supports united by low stretchers, w.75.5cm

1283 An early 19th century faded mahogany squarefront chest of two short over three long drawers, w.108cm

1284 Two mid-20th century two-tier tea trolleys, each on roller castors

1285 A 1930s light oak student's bureau together with; An early 19th century mahogany bowfront two-tier corner washstand w.82cm

1286 An Edwardian satin walnut twin pedestal dressing table, w.121.5cm

1287 Victorian floral carved mahogany dressing stool, with needlework upholstered and brass studded top

1288 An early 20th century chinoiserie black lacquer decorated two drawer writing table, raised on square tapering supports to castors, w.110cm

1289 A mid-Victorian mahogany round cornered chest, having central upper hat drawer flanked by twin short drawers over three long drawers, w.115cm

1290 Occasional furniture to include; an Eastern teak quartetto nest of occasional tables, the largest w.57cm; a late Victorian ash hinge topped commode stool; a papier-mache oval floral

decorated low tray table; a Duchess Victorian mahogany dressing table top section having swing mirror; and a needlework embroidered fire screen (5)

1291 A pine long side table, with single end drawer and raised on turned supports, w.147cm

1292 A late 19th century mahogany and brass bound campaign hinge topped travelling trunk, having brass end carry handles, 92 x 39 x 46cm

1293 A late 19th century mahogany and brass bound twin section campaign chest, of two short over three long drawers, having sunken brass handles and twin iron end carry handles (lacking supports), w.107cm

1294 An early 19th century mahogany round cornered tilt-top pedestal tripod occasional table, w.64cm

1295 A 19th century faded rosewood and satinwood crossbanded dropflap two drawer sofa table, raised on outswept end supports to brass paw feet, w.84cm (leaves down)

1296 A small Persian red ground woollen Bokhara hall mat, 90 x 65cm

1297 A Victorian mahogany hinge topped square commode, w.48cm

1298 An 18th century geometric joined and moulded oak chest-on-stand, having three graduated drawers, the stand with turned supports to shaped lower X frame stretcher, w.100cm

1299 A 20th century faded mahogany round cornered twin pedestal writing desk, having gilt-tooled green leather inset surface over an arrangement of nine drawers (some swan-neck handles missing, further damage and losses to inset surface), w.168cm

### **Toys - 1pm**

1501 A tray containing 48 Matchbox Lesney Models of Yesteryear 'straw box' models, with examples to include Y12 Ford Model T in 'Captain Morgan Rum' livery and others

1502 A tray containing a collection of Matchbox Models of Yesteryear modern issue diecasts, with examples including Y8 Yorkshire Steam Wagon, Y6 Rolls Royce Fire Engine, and others (40+)

1503 A tray of mixed diecast models to include a Solido Talbot T23, various boxed Rio models, and Lledo Days Gone

1504 A tray of mixed modern issue diecasts to include Corgi Classics, and Matchbox Models of Yesteryear

1505 3 various Franklin Mint diecasts to include a Ford Model T delivery truck, and 2 others

1506 A Gwilo International boxed 1/18th scale model of a McLaren Racing Car with chrome finish



- 1507 A tray containing a collection of mixed diecast to include a Burago Rolls Royce Camargue, a Land Rover Safari, and others together with a small selection of vintage Palitoy Action Man clothing and accessories
- 1508 A collection of mixed 1/18th and 1/24th scale diecasts to include a Revell 1/24th scale Peterbilt 359 Truck, a Maisto Jaguar XJ220, and others
- 1509 2 trays of mixed modern issue diecast to include 14 Matchbox Models of Yesteryear 'Woodgrain box' models, with specific examples including a Mercedes SS coupe, a Lagonda Coupe, and others
- 1510 A Danbury Mint 1/24th scale Aston Martin DB5 in metallic maroon in the original box, model has been on display
- 1511 3 trays containing a collection of mixed modern issue diecast, with examples including a High Speed VW Karmann Ghia Coupe, a Solido Hispano Suiza, and others
- 1512 2 trays of mixed modern issue diecast and model kits, with examples including a Minichamps 1/18th scale Opel Calibra, various Corgi Classics bus & coach models, and some model kits
- 1513 3 tubs containing a collection of mixed play-worn diecast to include various bus and coach models
- 1514 2 trays containing a collection of 1/18th and 1/24th scale diecasts, with examples including a Revell Volvo P544, a Maisto Chevrolet Corvette, and others
- 1515 2 trays containing a collection of 1/18th scale diecasts, with examples including a Burago Range Rover Sport, a Polistil Lamborghini Countach, and others
- 1516 2 trays containing a collection of mostly 1/43rd scale diecasts, with examples including a Corgi Toys Vauxhall Astra GTE, a Del Prado Ford GT, and others
- 1517 A tray containing a collection of mixed play-worn diecasts to include Matchbox Models of Yesteryear, and others
- 1518 A tray containing mixed play-worn diecasts, with examples including a Dinky Toys Studebaker President Sedan, a Corgi Toys Silver Jubilee London Bus, and others
- 1519 2 trays containing a mixed selection of modern issue diecasts to include various Corgi Classics, Corgi Tramlines models, Lledo Days Gone, and others
- 1520 A tray of mixed Herpa HO 1/87th scale boxed trucks, including a Mercedes Wagon & Trailer, and others
- 1521 A small collection of 5 Britains mounted Home Guards in generally very good condition
- 1522 A tray containing a collection of play worn Dinky Toys with examples including a Vauxhall Cresta, a Hudson Sedan, an Austin Devon, and others
- 1523 A tray containing a collection of play-worn Dinky Toys farming and construction models including a Muir Hill Dumper, a Coles Crane, a Dexta Tractor, and others
- 1524 A tray containing mixed diecasts, with examples including a number of Dinky Toys Leyland Royal Tiger Coaches, a Corgi Juniors blister packed Royal Mail Set, and others
- 1525 A tray containing a collection of Marklin HO scale locomotives together with a selection of track and signals
- 1526 Pair of Fly Helicopter Remote Control Helicopters, housed in the original window boxes
- 1527 A boxed Matchbuilder Electric Tram Car kit together with 2 modern issue Action Man dolls
- 1528 Collection of mixed white metal and diecast vehicles to include Brooklin Models 1/43rd scale 1937 Lincoln K Sedan, Dinky No.692 Leopard Tank, various Oxford Military models etc
- 1529 2 trays containing a collection of mixed diecast models, with examples including an EFE 1/76th scale Bedford SB Duple Vega Coach, a Corgi Trackside Harrington Horsebox, various 1/43rd scale Ferrari models, and others
- 1530 A tray of mixed play worn diecasts comprising of mostly Matchbox and Corgi Juniors miniatures, with specific models including a Matchbox No. 4 Pontiac Firebird, a Corgi Juniors Citroen Safari, and others
- 1531 A tray of mixed play worn diecast model cars, with examples including a Corgi Toys Ford Consul Cortina, a Heinkel Bubble Car, and others
- 1532 2 trays containing a collection of mixed modern issue diecasts, with examples including a Burago 1/18th scale Ford Focus Rally Car, an Oxford Diecast 1/76th scale Scammell Highwayman, a James Bond Citroen 2 CV from the film 'For Your Eyes Only', and others
- 1533 A collection of mixed boxed and loose radio controlled helicopter models to include a boxed Twister V2 Helicopter, and others
- 1534 A Sun Star 1/18th scale No. 1091 Volkswagen Golf GTI in its original window box, the model has previously been on display
- 1535 A collection of mixed board games and toys including a Merit Thomas The Tank Engine Train Set, a boxed 'Wembley' Football Cup Tie Game, and others
- 1536 A boxed Mah-Jongg set with instructions together with a small wooden Bagatelle Board

1537 A collection of play worn Dinky and Corgi Toys, including a Dinky Toys No. 23N Maserati Racing Car, and others

1538 2 boxes of mixed children's toys including a boxed modern issue Meccano Space Explorer, a Pinky & Perky bagatelle board, some K-Nex, and others

1539 Collection of mixed modelling and model spraying equipment to include compressor, Badger Airbrush and other accessories

1540 Collection of mixed 0 and OO Gauge modelling scenery and lineside accessories, to include ACEM Products

1541 Collection of mixed toys and models to include 0 Gauge Hornby Figures, various loose Dinky Toys, mixed parlour games, quantity of Gauge 1 figures and other mixed models

1542 A Timpo the Prairie Rocket the great train hold up set in original box with track together with a selection of Cowboy & Native American Indian figures

1543 A Scalextric Motor Racing Set No. 40, part boxed with Cooper and Lotus Racing Cars, various track, and the original instruction leaflets

1544 Microdot by Parker Boxed Board Game

1545 Collection of mixed card kits for 00 Gauge model railways to include Superquick examples

1546 Subbuteo Table Soccer Boxed Set, together with a No.61128 FA Cup

1547 Britains No.4375 Chimps Tea Party, plastic example, housed in a worn and damaged window box

1548 One box containing a quantity of railway photographs to include diesel locomotives dating from 1999 to 2000, together with various others

1549 Collection of Magic Roundabout Pencil Toppers

1550 Collection of mixed scientific kits and models to include RC Helicopter, Solar Powered Racing Car, Timberkits Stephenson's Locomotive and others, all boxed

1551 Bayko, No.15 Building Outfit, boxed

1552 A static display model of an Air France Concorde approx 25" 64cm long

1553 Collection of mixed scale modern issue diecast to include Vitesse, Oxford, Corgi Vintage Glory of Steam and others, majority boxed

1554 Collection of mixed models to include a Caribbean Cruiser Radio, 2 Smoke Display models of Cruiser and Locomotives, together with a Meccano Style Helicopter

1555 A collection of Hornby O Gauge railway models and accessories including a boxed No.

201 Tank Goods Set, a Number 1 Footbridge, as well as various buildings and a quantity of track

1556 A boxed Bluebird Zero Hour action set together with a reissued Marx Captain Blood and the Buccaneers play set

1557 A tray of mixed diecasts to include various Corgi Toys Bus and Coach models, as well as some Lledo Days Gone vehicles

1558 2 trays containing a collection of mixed play worn diecasts, with examples including a Dinky Toys Range Rover, a Corgi Toys Newmarket Racing Stables Horsebox, a Matchbox Super Kings Mercury Police Car, and others

1559 A Mettoy tinplate and clockwork Cherokee Special Turn-about Loco comprising a tinplate railway track with turning points at both ends, and a clockwork locomotive engine with winding key and on/off toggle switch, sold in the original brightly coloured box

1560 A collection of various model kits, with examples including a Revell 1/16th scale Volkswagen Camper Van, a 100 years of BMW 2 car set, and others

1561 2 Tamiya 1/24th scale boxed Ferrari model kits comprising a Ferrari F50, and an Enzo Ferrari

1562 A tray containing mixed modern issue diecasts, with examples including a Corgi Classics Morris Minor Police Van, a Burago 1/24th scale Ferrari F310B, and others

1563 Danbury Mint 1/43rd scale pewter models from the Jaguar Collection, with examples including an E Type Jaguar, a Jaguar SS100, and others

1564 A collection of boxed Corgi Classics modern issue brewery related diecasts, with examples including a limited edition Greene King 2 set, a John Smiths AEC Tanker & Thorneycroft Beer Truck, and others

1565 2 trays containing a collection of mixed modern issue diecasts, with examples including a Corgi Collection London Routemaster Bus, A Lledo Golden Days of the Film Industry Set, and others

1566 A vintage Gee Bee Toys wooden fort together with a selection of lead and plastic figures

1567 A tray containing a quantity of mixed play-worn diecast to include a Matchbox Dinky Citroen 15CV, various Solido Cars of the Century, and others

1568 A large box containing various play-worn diecast model cars, with examples including a Corgi Toys Mercedes Ambulance, a Matchbox Yesteryear Y2 Prince Henry Vauxhall, and others

1569 2 trays containing various play-worn diecast models including Lledo, Corgi, Matchbox, various Britains Farm, and others

- 1570 Corgi Toys modern issue 1/50th road haulage group including a Leyland DAF 85 Series in 'James Irlam' livery, and others
- 1571 A tray of various mixed play-worn diecasts including Matchbox, Corgi, and others
- 1572 A tray containing a large quantity of play-worn diecasts to include Corgi, Matchbox, and Dinky Toys
- 1573 2 trays containing a collection of various modern issue Star Wars figures, vehicles, and play sets, with specific examples including The Emperor, Chewbacca, a Tie Fighter, and others
- 1574 A tray of mixed children's toys to include a Nintendo Gameboy Color, some Dan Dare Eagle Comics, a South Park Kenny figure, and others
- 1575 A wooden scratch built model of a Fire Engine with fire escape ladder, requires repair
- 1576 A box containing a collection of Matchbox and Micro Machines play sets
- 1577 2 boxes containing a collection of mixed children's toys and games, with examples including a Spear's 'Return of the Dinosaur' game, Parker's the game 'Risk', and others
- 1578 A collection of 5 vintage Tonka Toys, Nylint and similar large scale pressed steel models including a Cement Truck, a Dumper Truck, a Fire Engine, a Jeep, and a Chevrolet Pick-Up
- 1579 A tray containing a collection of mixed play-worn farming and construction diecast toys including a Siku John Deere Tractor, a Britains Autoway Cement Mixer, and others
- 1580 42 various boxed Matchbox Models of Yesteryear, all housed in original red ground window boxes to include a Y36 Rolls Royce Phantom 1, and others
- 1581 A collection of 18 boxed Funko Pop figures to include Fantastic Beasts and Where to Find Them, Disney Dragon and others
- 1582 18 various boxed Funko Pop Vinyl action figures to include James Bond 007, Magic the Gathering, BFG and others
- 1583 A Funko Pop Vinyl No. 336 Star Wars D-O bobble head action figure, special edition example housed in the original window display box
- 1584 A Funko Pop Albums No. 36 Blink 182 Enema of the State, 3-piece action figure set, housed in the original acrylic and card plastic casing
- 1585 A collection of 18 Funko Pop Vinyl action figures to include Batman, Suicide Squad, Halo, and other examples
- 1586 A collection of X-box 360 video games and accessories to include Sole Calibre 3, Call of Duty Black Ops 2, and others
- 1587 Three trays containing a quantity of Walking Dead action figures to include Skybound Exclusives, specific examples to include The Walking Dead Governor action figure, a Walking Dead Mikone Rick & Daryl 3-piece action figure set, and others
- 1588 Two trays containing a quantity of Star Wars Power of the Force action figures and gift sets by Kenner, specific examples to include Hammerhead, Freeze Frame Action Slide Lobot, Admiral Aqbar and others
- 1589 A collection of Lord of the Rings white metal and plastic action figures by Di Agostini and Toybiz, specific examples to include a Lord of the Rings Map of Middle Earth Fellowship of the Ring Deluxe gift pack, Salrons Evil Warriors, and other white metal figures
- 1590 A collection of mixed plastic kits and popular culture board games to include Warhammer Underworlds, Bandai Amain Ghost plastic kit, Star Wars plastic Trivial Pursuit, and various others
- 1591 A collection of home made Disney and children's TV related dioramas and figures, to include Bambi, Toy Story, Mickey Mouse and others
- 1592 One tray containing a quantity of various modern release plastic action figures to include DC Bat Boat, Bat Mobile, Captain America and other franchises
- 1593 A Hornby 00 gauge Hogwarts Express electric train set, housed in the original polystyrene packed box
- 1594 A Hornby Railways R1126 Digital mixed freights goods set housed in the original polystyrene packed box
- 1595 Three trays containing 45 various carded Matchbox and Racing Champions diecast Nascar vehicles to include Kenny Wallace, McDonalds Racing Team examples, and others
- 1596 70+ various boxed Lledo Days Gone modern release vehicles, various liveries to include Royal Mail, Beazer and others
- 1597 A radio controlled 1/24 scale Battle tank type 90 housed in the original polystyrene packaging, together with a Flames of War WWII miniatures board game No. BB105
- 1598 Two trays containing a collection of Thomas the Tank ER TL and Tomy action figures and playsets
- 1599 A collection of six various boxed Lima, Replica and Hornby 00 gauge model trains to include a Lima Lady Godiva, a Lima Bescott MD Class 31 diesel and others
- 1600 Three trays of Around the World keyrings, to include Isle of Wight, Mickey Mouse, Disneyland, etc

1601 A collection of three various boxed Nerf guns to include Elite N Strike and Fortnite Nerf by Hasbro

1602 Two trays containing a quantity of plastic modern release military children's toys to include Action Man and others

1603 A quantity of vintage custom car magazines

1604 A quantity of Hot Car Power & Custom Magazines

1605 A collection of pin badges to include football, Police, charity, and around the world interest examples, all contained in a Leuchtturm pin album

1606 One tray of mixed modern release desk clocks by Imperial and Quartz Geneva (30+ examples in total)

1607 Two trays of mixed modern release diecast to include Matchbox Models of Yesteryear and Corgi 1950s

1608 A quantity of Hornby 0 gauge clockwork rolling stock to include a No. 20 goods set plus other boxed and loose accessories

1609 A Funko Pop Games and Avengers action figure group to include a special edition No. 308 Thanos, together with a No. 511 Fortnite Loot Llama action figure

1610 Two trays containing a quantity of Bat Man related collectables to include Lego, graphic novels, Hot Toys action figures and others

1611 A collection of Star Wars modern release action figures, trading figures, cards and pin badges, to include The Jumbo Sticker collection, a Star Wars Millennium Falcon Guide collection of various tops, Star Wars Revolution trading cards etc

1612 A collection of Penthouse Collectors' Series, Penthouse Forum, Portfolio Secrets, and similar trading cards/picture cards, to include images of Josephine by Boris & Julie

1613 A quantity of Doctor Who Files hardback books to include Captain Jack and the Ood

1614 A small collection of various playworn Matchbox 1/75 series die casts to include Evening News van, milk float, and others

1615 One box of boxed & playworn Dinky, Corgi, and Matchbox diecast vehicles to include a Corgi GS24 constructors' gift set, a Dinky Toys No. 970 Jones Cantilever crane, and others

1616 One tray of various modern issue diecast to include Nascar and TV interest related examples

1617 Three boxes of football programmes to include Ipswich Town interest

1618 One tray of various hard back and soft back magazines and books to include The Dandy, Classics Illustrated, and Sad Sack

1619 A Bachmann Railways 00 gauge boxed locomotive group to include a J39 No.64960 BR black loco and tender, a Bachmann K3 No. 61994 The Crest Marquis loco and tender, together with a quantity of packaged De Agostini 00 gauge track

### Approx 2pm

1620 One tray containing a quantity of 00 gauge boxed rolling stock and accessories to include Dapol and Hornby, specific examples to include a Dapol O&K JHA end hopper wagon, and others, all housed in original packaging

1621 A Universal Hobbies 1/16 scale diecast model of a Massey Ferguson TE20 Little Grey Tractor

1622 A collection of three various boxed Scalextric and Tyco gift sets to include a Scalextric Sport Le Mans 24, a Scalextric Porsche Powerslide, and a Formula Tyco Nigel Mansell World Champion gift set

1623 A Scalextric boxed gift set group to include a Porsche Powerslide together with a Micro Scalextric Quantum of Solace 007 racing set, both in original packaging

1624 A collection of Caterpillar and earth moving related toys & collectables to include a construction express train, and a radio controlled 2.4ghz diecast model of a Work excavator

1625 Four boxes of Watersmeet Studios and Cruse & Co. collectable plates and figurines, and a collection of as new gentleman's shaving sets

1626 A quantity of children's toys & collectables to include Fisher Price, Newray boxed Long Haul truck & trailer, a Mickey Mouse chess game, various child's building blocks, and a quantity of dolls house furniture

1627 A collection of toys to include plastic vinyl dinosaurs, Laser X, laser tag gift sets, a Robo Alive dinosaur, and other large scale plastic Batman style action figures

1628 A collection of four loose 1/18 scale diecast vehicles to include a Maisto Audi R8R Le Mans 1999 race car

1629 Two boxes of plastic and wooden aircraft model kits to include Revell Airfix, Top Driver, and others to include a Revell Fokker DR1 Red Baron, a Keelcraft Chief balsa wood kit, and others

1630 A quantity of 00 gauge Lineside plastic and resin buildings to include Hornby Hobbies

1631 A collection of railway interest puzzles and stamp albums, to include Swansea Docks by Chad Valley Puzzle Company

1632 A Corgi Aviation Archive No. AA34007 Consolidated Beehive from 24D You Cant Miss It Aircraft, together with a Gearbox Collectables No. 11503 limited edition 1942 F4F Wildcat, both in original boxes

1633 A Corgi Aviation Archive mixed scale boxed aircraft group to include a No. AA32606 Avro Lancaster Mk10 FM104 Rescue Unit aircraft, and a Corgi No. AA32904 Boeing 707-327C Braniff International Airways passenger aircraft both in original boxes

1634 One box containing a quantity of Warhammer Games Workshop Fantasy plastic miniatures

1635 A collection of mixed media plastic and balsa wood kits to include a Heller Boeing 747 1/125 scale plastic aircraft kit, a Hobbies Old Time Ship models bundle of wood, and a plastic Tamiya kit built model of a Brabb ham Martini Racing No. 8 race car, and others

1636 One tray containing various Matchbox, Britains, Joel, Siku, and similar, tow truck and farming interest diecast vehicles to include a Britains breakdown recovery service tow truck, a Corgi Major toys homes wrecker and others

1637 Three trays containing a quantity of boxed diecast to include Britains, ERTL Siku and others, specific examples to include a Siku Ford 88390 tractor, a Siku Ford cargo breakdown truck, etc

1638 Three boxes containing a quantity of various 00 gauge locomotives, rolling stock accessories, to include a Hornby Thomas the Tank engine duck locomotive, various LNER teak coaches, Hornby Flying Scotsman loco and tender, etc

1639 Three boxed incomplete 00 gauge Hornby and Lima trainsets to include Thomas the Tank Engine and Friends, The Hornby Blue Streak and a Lima Intercity 125 gift set

1640 A quantity of various boxed and part boxed Burago 1/18 scale diecast to include a Ferrari 456GT, a Bugatti EB110 and others

1641 Two trays of mixed loose diecast to include Britains Majorette, Matchbox Superkings and others, specific examples to include a Britains military helicopter, a Britains Massey Ferguson 760 combine etc

1642 One tray of mixed diecast to include Dinky Toys, Britains lead hollow cast Farmers Glory wooden miniatures, etc

1643 Various playworn repainted Corgi and Dinky Toy diecast, to include Corgi Toys ERF model 44G delivery truck and a Citroen Safari

1644 A collection of Pizza Hut giveaway Captain Scarlet and sci-fi interest plastic cups and toppers; together with a quantity of vintage trading cards and plastic farming figures

1645 Three trays containing a quantity of mixed plastic and diecast aircraft kits, to include Meccano style examples, specific brands to include Corgi Aviation Archive, Revell B-17 F Flying Fortress etc

1646 Three albums containing a quantity of model collecting catalogues, brochures and ephemera, to include Mamod and Corgi

1647 A Futab Attack 2ER radio controlled handset, together with a loose Acoms Techniplus radio control handset

1648 Five plastic model steam engine kits, to include a Tom Varley Museum of Steam kit by Bandai etc

1649 Three trays of mixed issue boxed diecast vehicles and accessories, to include Corgi, Matchbox Models of Yesteryear, Dinky by Matchbox etc, to include a Corgi Classics Stockport Bureau Police gift set

1649a Two trays of mixed modern release diecast vehicles by Lledo Days Gone, Corgi, Dinky by Matchbox etc, to include a Lledo D-Day 50th Anniversary of Operation Overlord gift set, a quantity of Corgi Royal Mail vans etc

1650 Three trays of mixed boxed and loose diecast vehicles by Model Box, Corgi Classics, Solico and others, to include a Corgi Classics Eddie Stobart Thames Trader dropside lorry, Solido Alpine Turbo GAM2 race car etc

1651 Four trays of mainly Lledo Days Gone boxed and loose diecast miniatures, to include a quantity of Corgi Motoring Memories diecast vehicles, mixed regions and liveries to include a Cameo Christmas Collection gift set

1652 Two trays of mixed issue diecast vehicles and plastic kits, to include an MPC Pontiac Fiero, Corgi Collectors Jaguar XJ Coupe etc

1653 Three trays of mixed modern release diecast to include Corgi Noddy Toyland car series etc

1654 A tray of mixed diecast and plastic toys, to include Matchbox, Dinky, Models of Yesteryear etc

1655 A box of mixed children's annuals, to include Supercar, Tenderfoot, Lion 1966 etc

1656 A tray of mixed scale diecast vehicles to include Franklin Mint and Corgi

1657 Four boxes of mixed media plastic and wooden kits and accessories, to include Airfix, Revell, balsa wood boat kits etc; together with a quantity of plastic dinosaur and action figure accessories

1658 A box of Tetley Tea collectable houses and figurines, the majority housed in original packaging

1659 A box of mixed Doctor Who and sci-fi interest action figures and collectables, to include a Daleks in Manhattan Airfix kit, a set of Star Wars rollerskates etc

1660 A box containing a large quantity of toys to include Kinder

1661 A box containing a large quantity of toys to include Kinder

1662 A collection of mainly modern release Micro Machines, to include Tanka Style carry case

1663 A large box of toys to include Kinder

1664 A large box of toys to include Kinder

1665 A collection of electronic computer games, to include PlayStation Rock Band gift set, and a PS2 Guitar Hero II boxed set with two loose Guitar Hero guitars

1666 A box of mixed toys and board games, to include Doctor Who Battle for the Universe, Land of the Lost pterodactyl glider etc

1667 A tray of mixed diecast vehicles, to include Matchbox, Corgi and others, examples to include a Corgi Aston Martin DB5

1668 A large quantity of mixed board games, to include the Ideal Corporation Tincan Alley boxed set, Goosebumps One Day Away at Horrorland, Tasmanian Devil wall clock and other associated collectables

1669 Two boxes of toys and media, to include Disney, Looney Tunes, Goosebumps etc

1670 Three boxes of mixed children's collectables to include Captain Scarlet and Star Trek Pizza Hut giveaway drink containers, Beetlejuice car, soft-filled Batman figurine etc

1671 A box of collectable trading cards to include Harry Potter

1672 A tray of motoring interest books

1673 A box of children's annuals, to include ABC of Space, Countdown etc

1674 A tray of modern issue diecast, to include EFE Exclusive First Editions

1675 A tray of 1:43 scale Vanguards diecast vehicles, to include a Singer Ford 300E Thames van

1676 A collection of mixed toys to include a Mamod stationary steam plant, a Corgi Massey Ferguson 780 combine, Victory Models Vosper RAF crash tender etc

1677 A Galactic Invaders by Brandvance electronic computer game, housed in the original polystyrene packed box

1678 A pair of ESSO Collection large scale diecast vehicles, being road tanker and car transporter

1679 A large collection of mixed soft-filled toys and collectable dolls, to include the Leonardo Collection

1680 A box of Simpson's related collectables to include the Scalextric Skateboard Chase game

1681 A tray of Star Wars, Thunderbirds and other TV related action figures and vehicles, to include Thunderbird II

1682 Three boxes of Urura and Scalextric slot-racing cars and accessories

1683 A tray of mixed toys to include Airfix, Revell and others, to include a Gate 1:18 model Jeep

End of sale

## **Sales & Contacts**

### **Home & Interiors**

These three weekly sales are the largest of their kind in East Anglia. The majority of lots come from house clearances including deceased estates, and range from modest items worth a few pounds to good quality reproduction furniture, Georgian and later antiques selling for up to £1000.

**Contact: Shaun Crichton MA [scrichton@lsk.co.uk](mailto:scrichton@lsk.co.uk)**

### **Fine Art & Antiques, Classic Cars & Motorcycles**

Quarterly Fine Art sales encompassing approximately 600 lots that include antiquarian books, fine ceramics & glassware, silver, jewellery and watches, Asian art, objet d'art, pictures & prints, clocks & barometers, rugs, and fine furniture and furnishings. Our June sales include a section of classic and vintage automobiles and motorcycles.

**Contact: Edward Crichton ASFAV [ecrichton@lsk.co.uk](mailto:ecrichton@lsk.co.uk)**

### **Toys & Models**

Lacy Scott & Knight hold the largest quarterly sales of Toys and Collectors' Models in the UK, to include; diecast vehicles, trains of all age and gauge, live steam engines, lead and plastic figures, Dinky & Corgi Toys, Matchbox, retro video games, railwayana, action figures & Star Wars etc

**Contact: Oliver Leggett BA Hons [oleggett@lsk.co.uk](mailto:oleggett@lsk.co.uk)**

### **Affordable Jewellery & Watches**

Three Jewellery & Watches auctions per year to include vintage and modern items of quality and costume jewellery, fob, pocket & wristwatches, and all manner of bijouterie ranging from £50-500.

**Contact: Hannah McWhirter FGA, DGA [jewellery@lsk.co.uk](mailto:jewellery@lsk.co.uk)**

### **Twentieth Century Art & Design**

These twice-yearly sales include pieces from the Aesthetic Movement, Arts & Crafts, Art Nouveau, Art Deco, Bauhaus, De Stijl, Modernism, Post-Modernism, Memphis, Modern Art, Pop Art and Contemporary Art, with items by names such as Clarice Cliff, Lalique, Moorcroft, & Liberty etc

**Contact: Shaun Crichton MA [scrichton@lsk.co.uk](mailto:scrichton@lsk.co.uk)**

### **Medals & Militaria with Country Pursuits**

Twice-yearly Medals & Militaria sales to include military & honorific medals, antique firearms, uniforms, edged weapons and other related ephemera. Followed by an auction of sporting related effects to include taxidermy, horse-racing and fishing ephemera etc

**Contact: Glenn Pearl [gpearl@lsk.co.uk](mailto:gpearl@lsk.co.uk)**

### **Coins, Tokens & Banknotes, Music, Film & Sport Memorabilia**

Twice yearly auctions to include antique & commemorative coinage and coin sets, banknotes and tokens, film posters, autographs, collectable vinyl, film props and much more.

**Contact: Glenn Pearl [gpearl@lsk.co.uk](mailto:gpearl@lsk.co.uk)**

### **Wine, Port & Spirits**

Christmas sales to include; fine and affordable wines, ports, spirits and related ephemera.

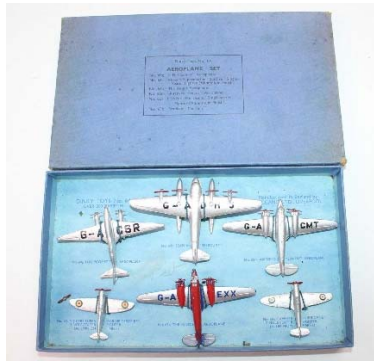
**Contact: Edward Crichton ASFAV [ecrichton@lsk.co.uk](mailto:ecrichton@lsk.co.uk)**

# FORTHCOMING AUCTIONS

## Home & Interiors



## Toys & Collectors' Models



## Coins, Banknotes & Tokens



## Affordable Jewellery/watches



## 20<sup>th</sup> Century Design



## Medals, Militaria & Country Pursuits



## Wines, Ports & Spirits



## Fine Art & Antiques



**Sales  
Calendar available  
at Reception**

**NEXT HOME & INTERIORS SALE: SATURDAY 21<sup>st</sup> OCTOBER**

**Our full 2023 sales calendar is available online and at Reception**

PLEASE READ THE CONDITIONS OF SALE AS DISPLAYED AT THE AUCTION CENTRE AND IN ALL CATALOGUES

TEL: **01284 748 625** E-mail: [FINEART@LSK.CO.UK](mailto:FINEART@LSK.CO.UK)

The Auction Centre, 10 Risbygate Street, Bury St Edmunds, IP33 3AA

[www.lskauktioncentre.co.uk](http://www.lskauktioncentre.co.uk)